

The background of the entire page is a dense, repeating pattern of overlapping, colorful, geometric shapes. These shapes, primarily in shades of blue, green, and orange, resemble a complex circuit board or a maze. The shapes are interconnected, creating a sense of depth and movement. The colors are vibrant and contrast sharply against each other.

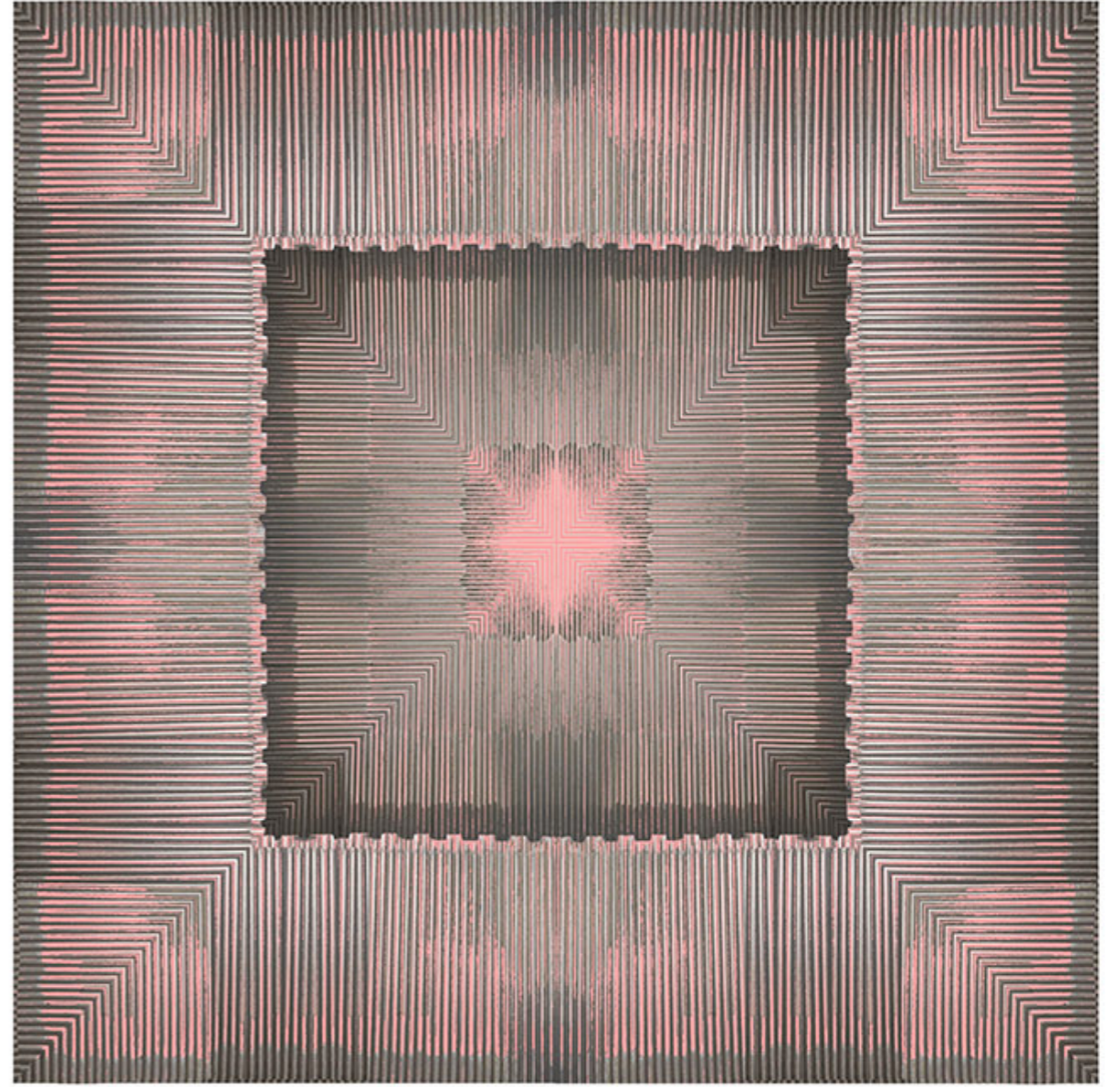
SELECTION DE CARREES ROB WALTERS

DADAESQUES 2019



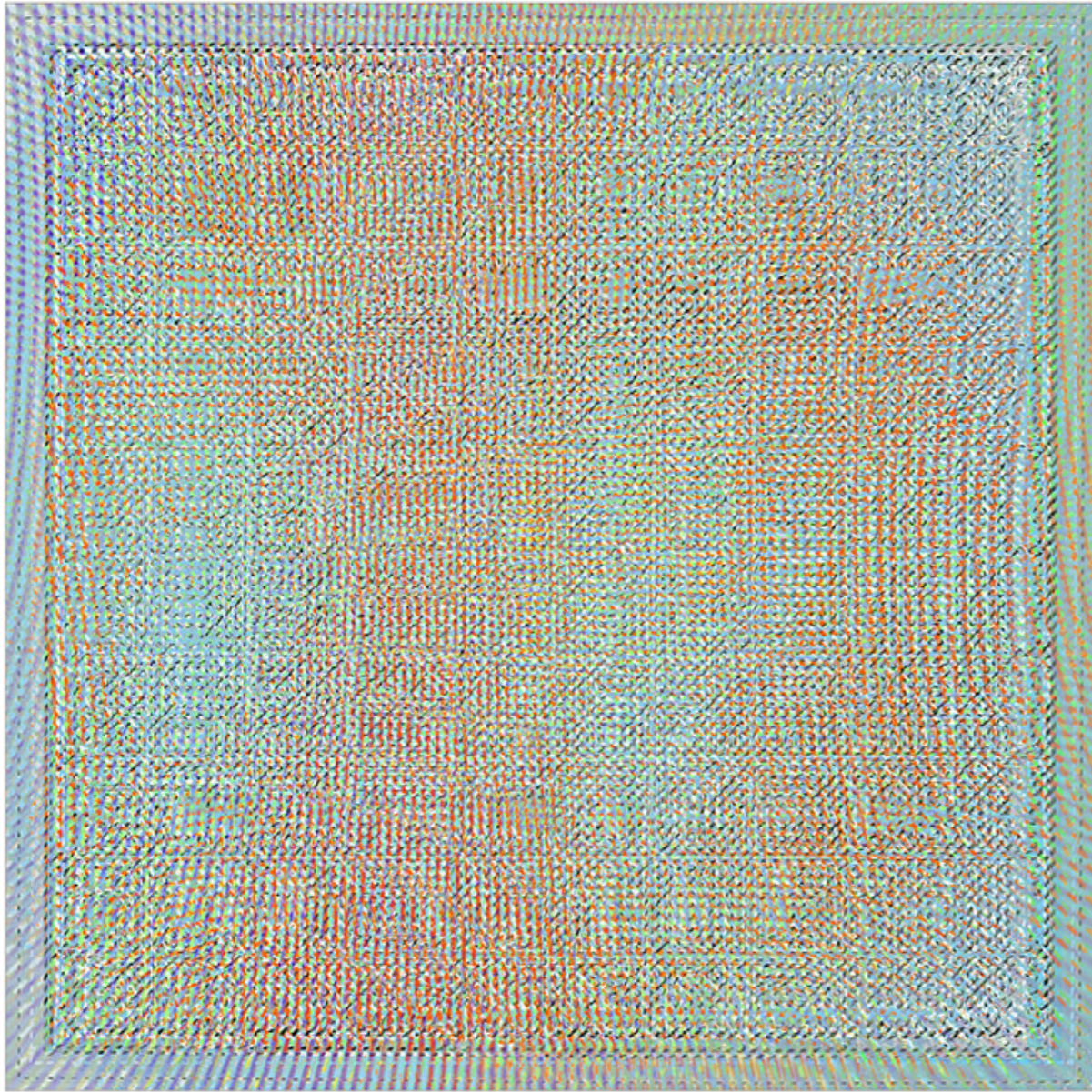
yaza

dadaesques printed on silk



amaz

SKA RVZ by rob walters



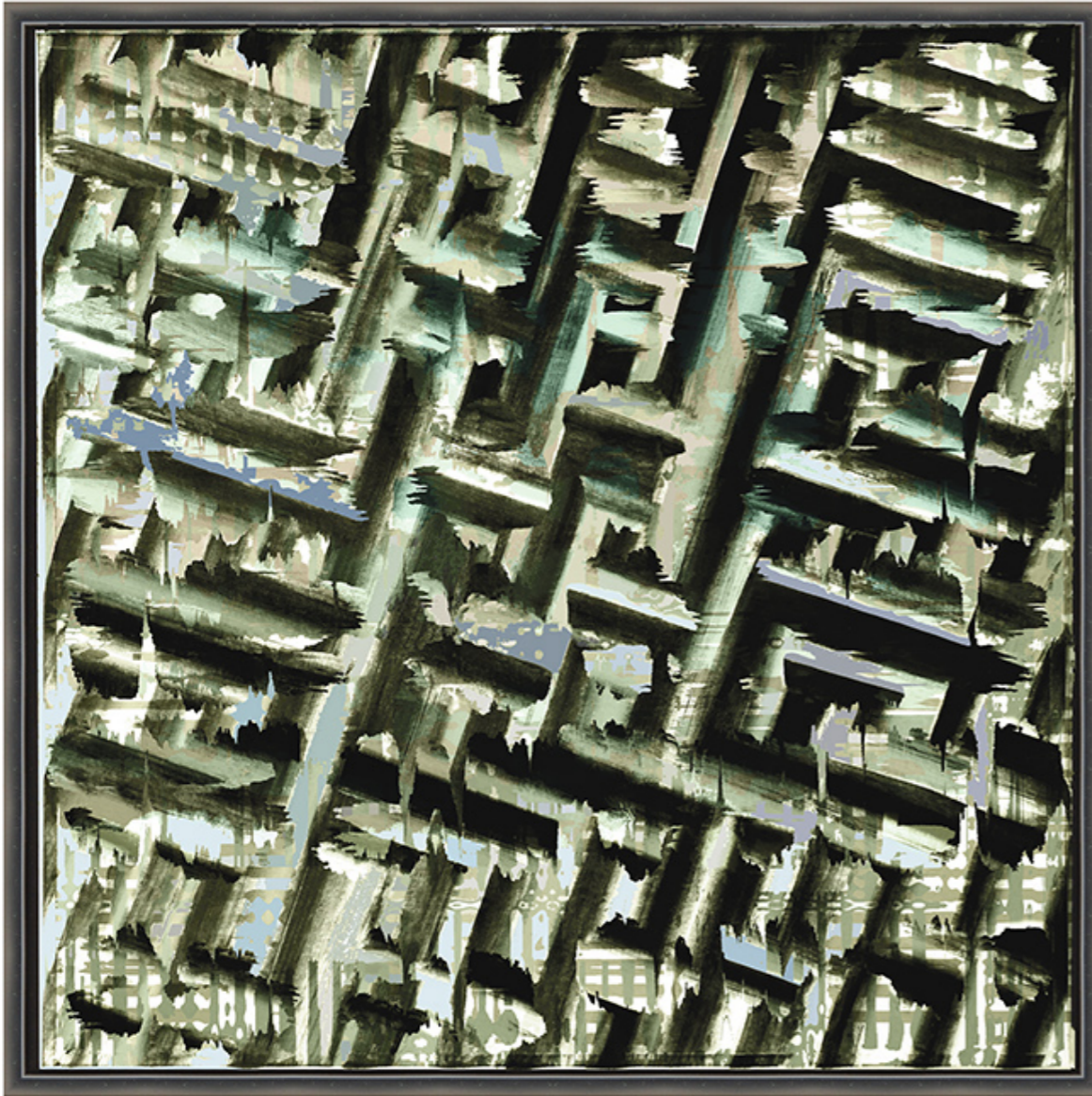
elam

dadaesques printed on silk



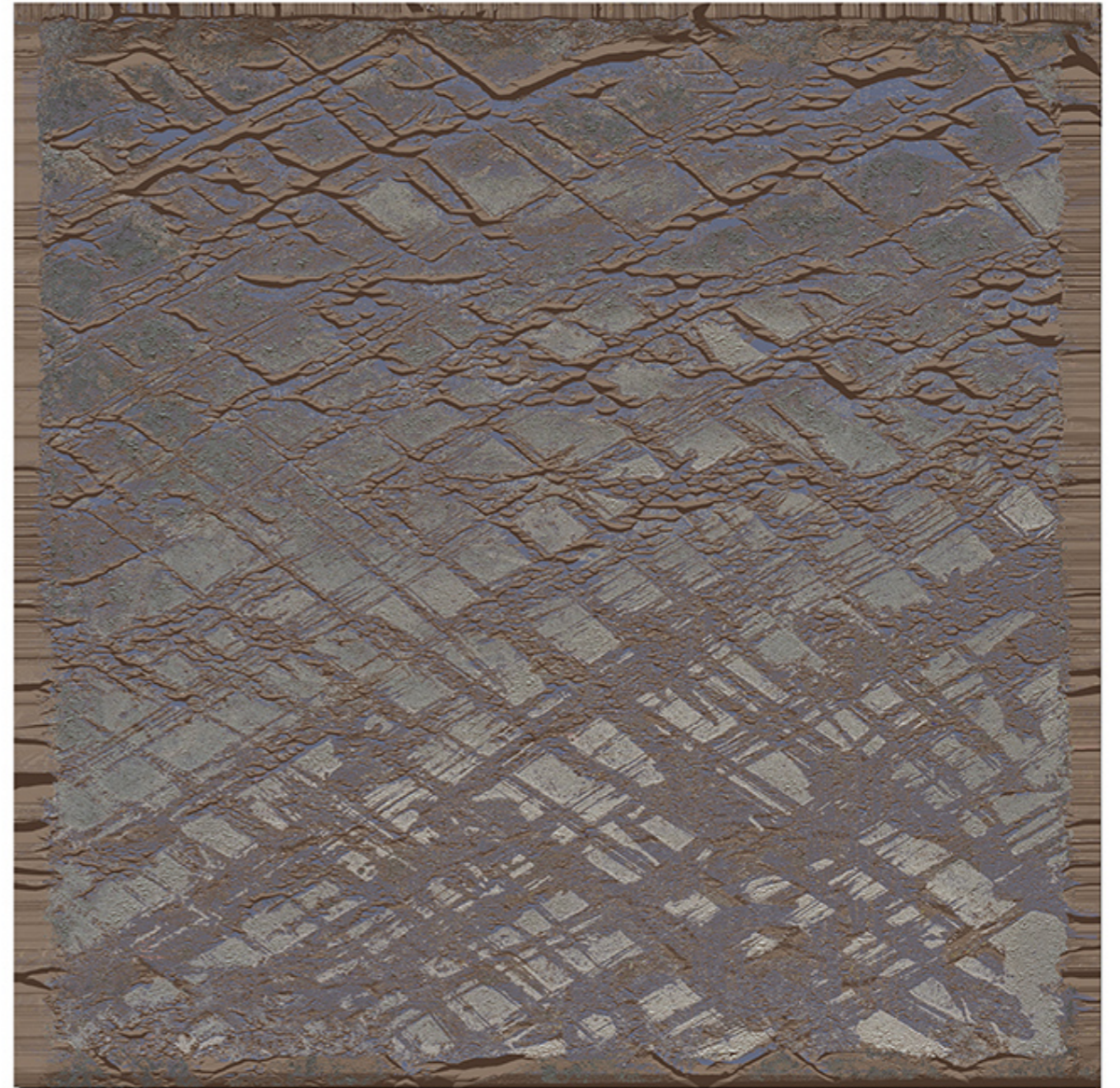
greco

SKA RVZ by rob walters



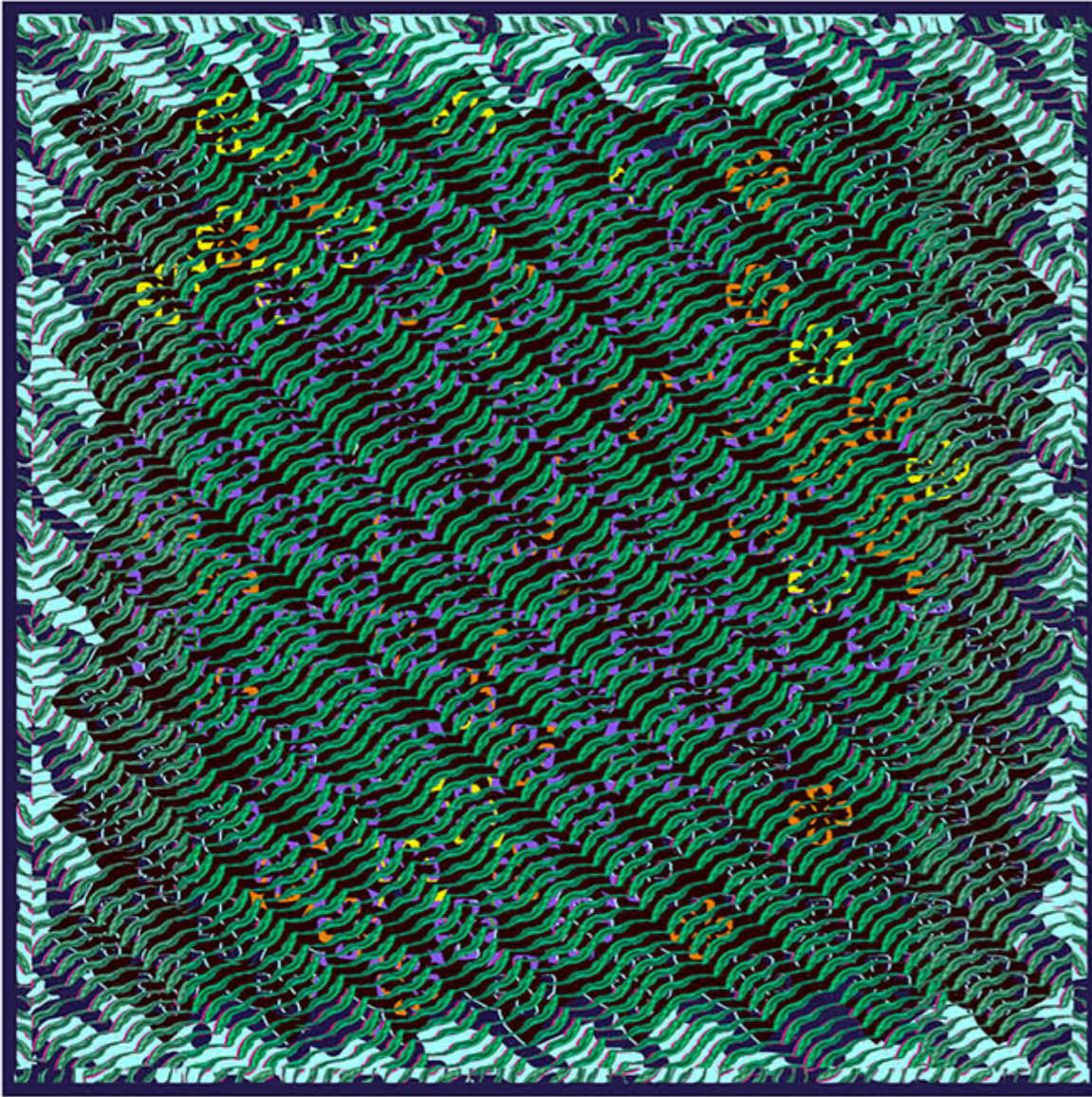
rosac

dadaesques printed on silk



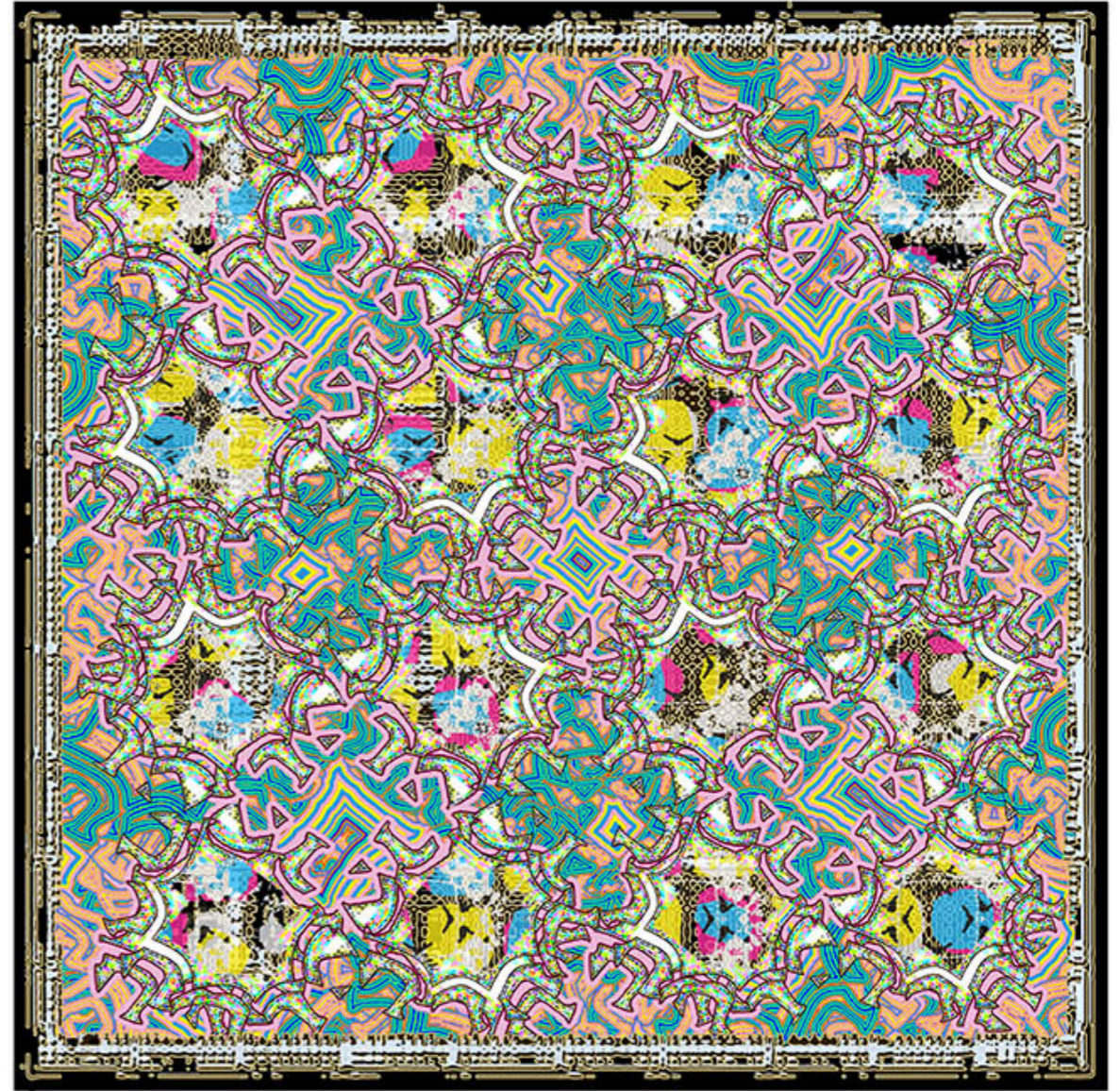
razes

SKA RVZ by rob walters



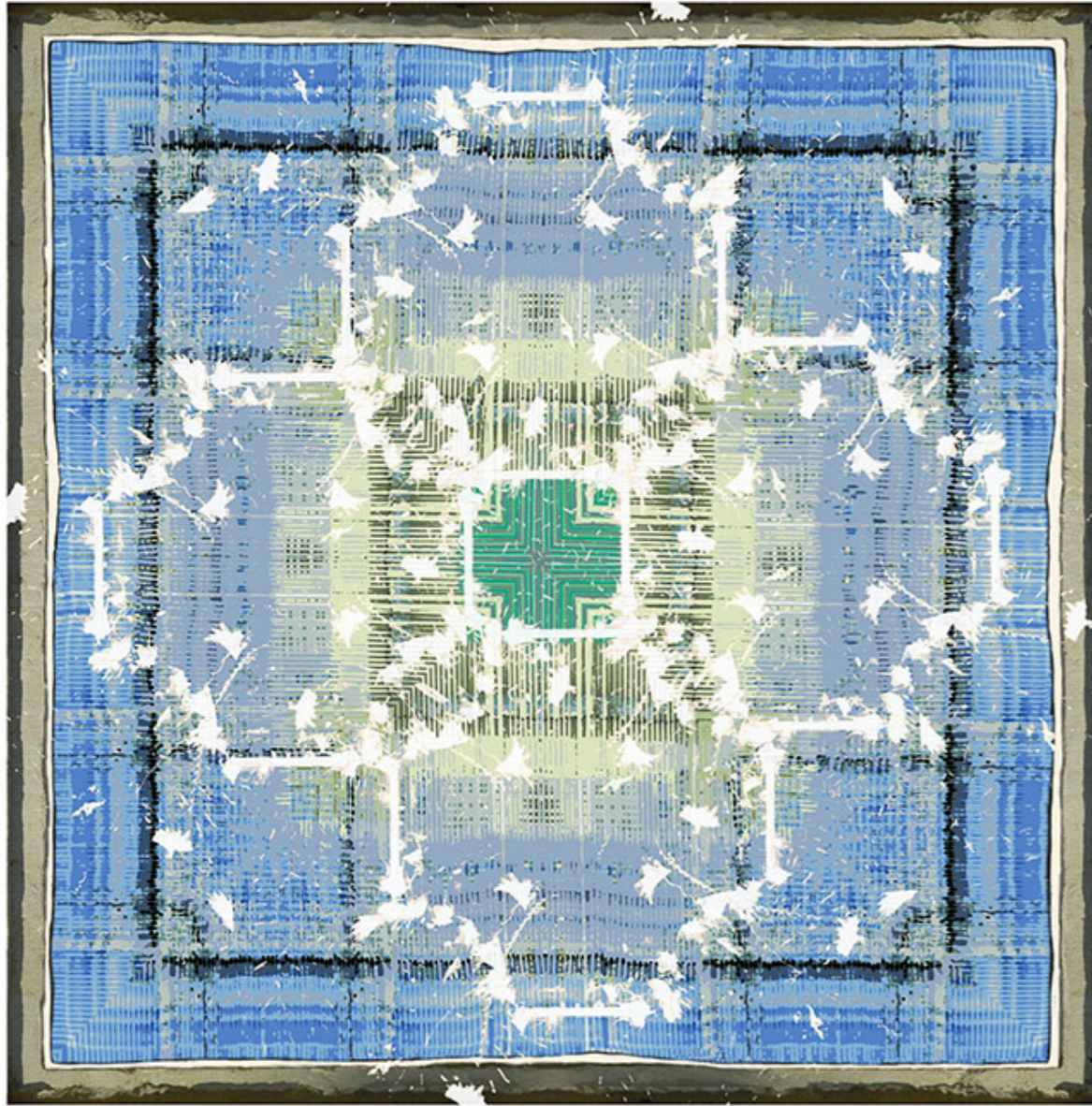
pays bas

dadaesques printed on silk



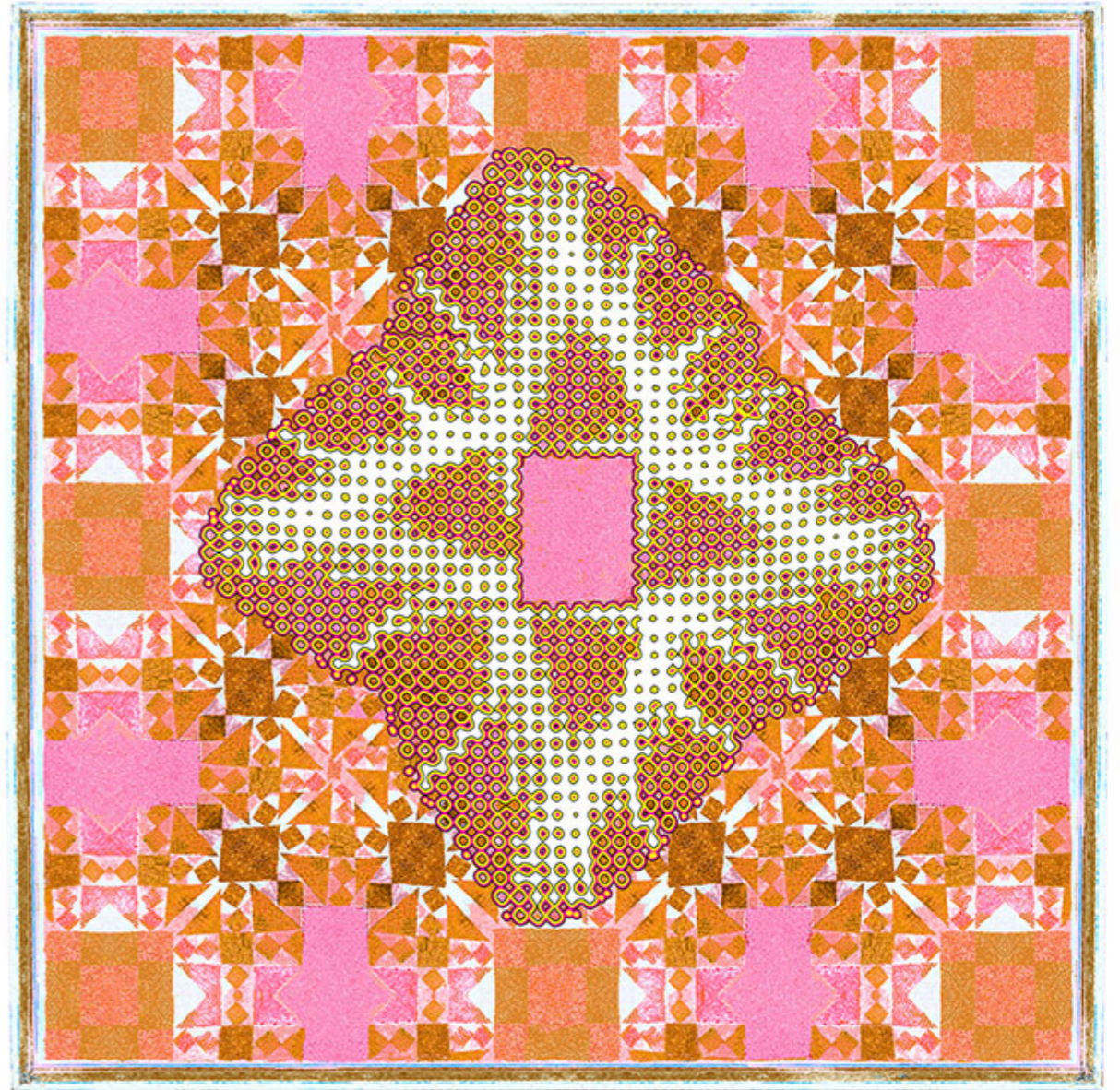
gayet

SKARVZ by rob walters



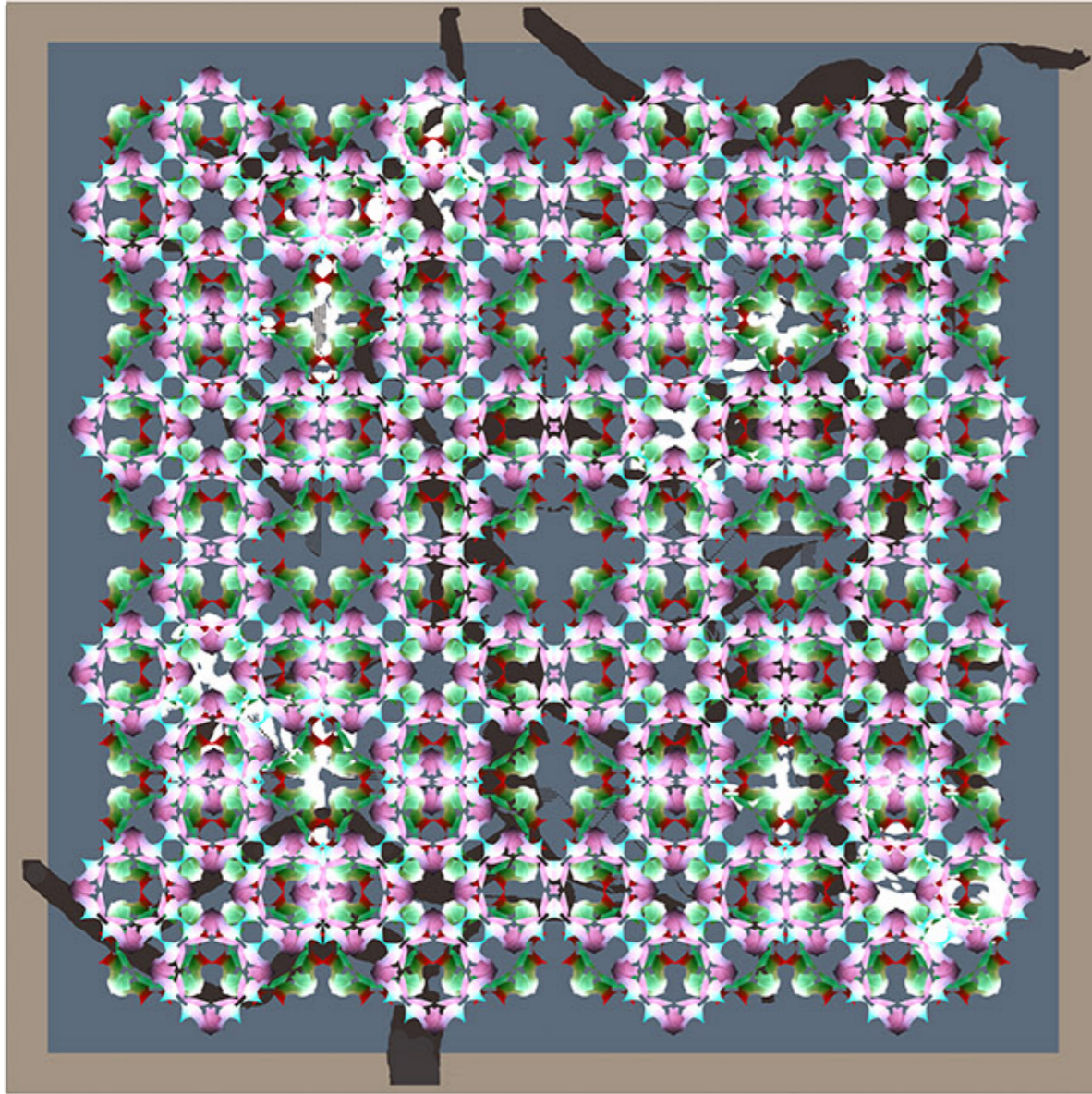
pasar

dadaesques printed on silk



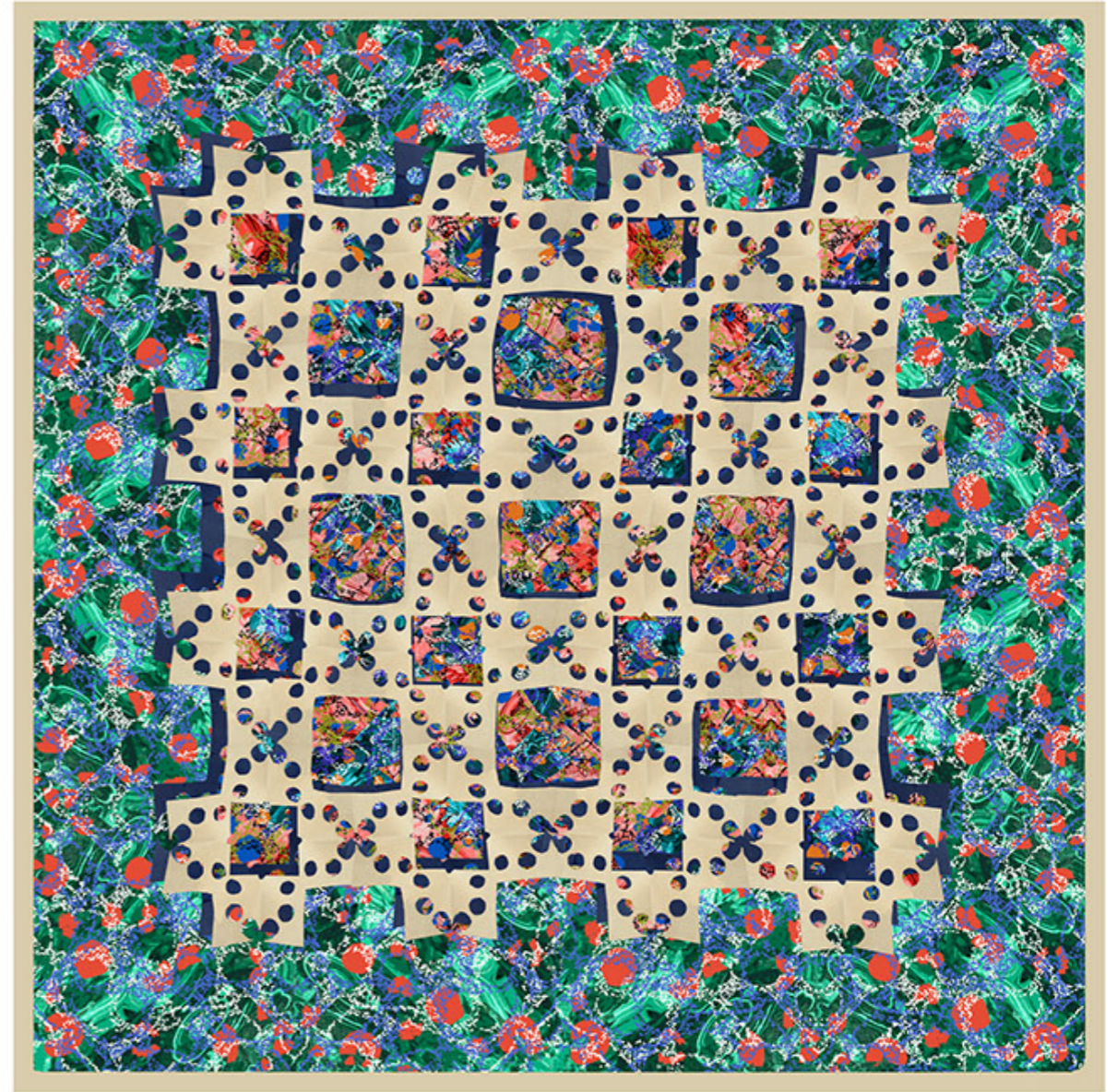
oscilla

SKA RVZ by rob walters



blancs

dadaesques printed on silk



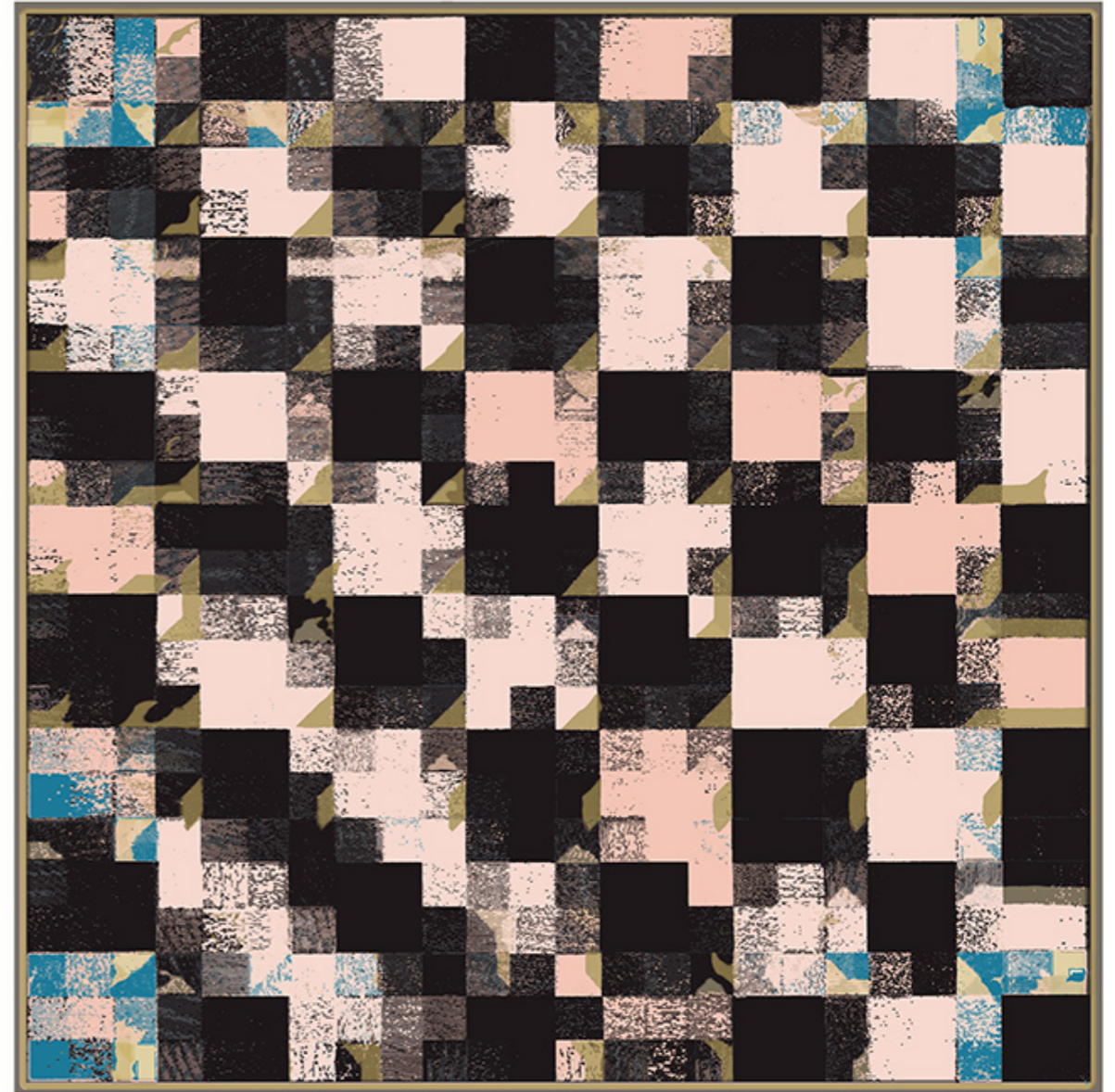
jeux

SKA RVZ by rob walters



chardin

dadaesques printed on silk



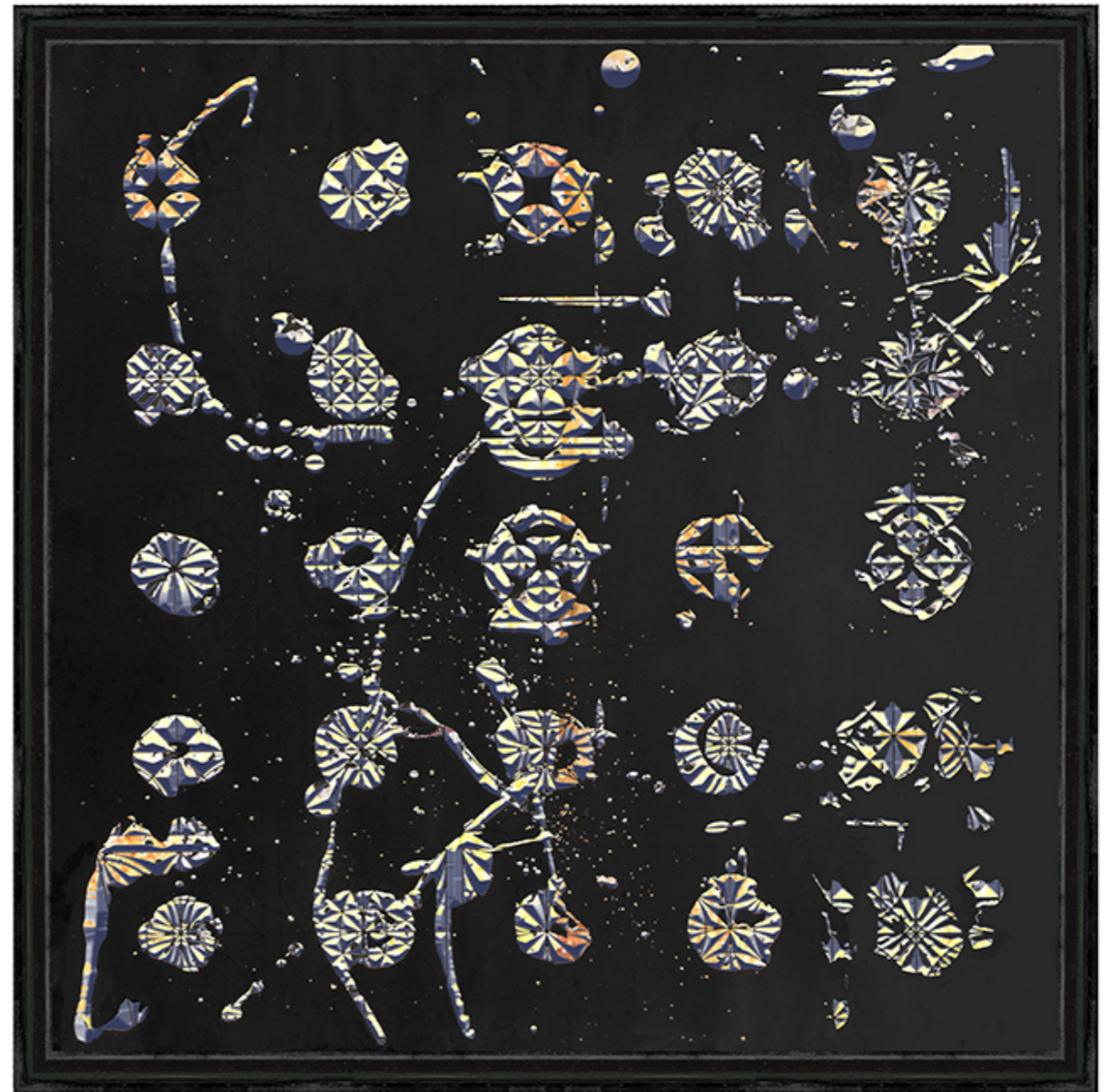
parts

SKA RVZ by rob walters



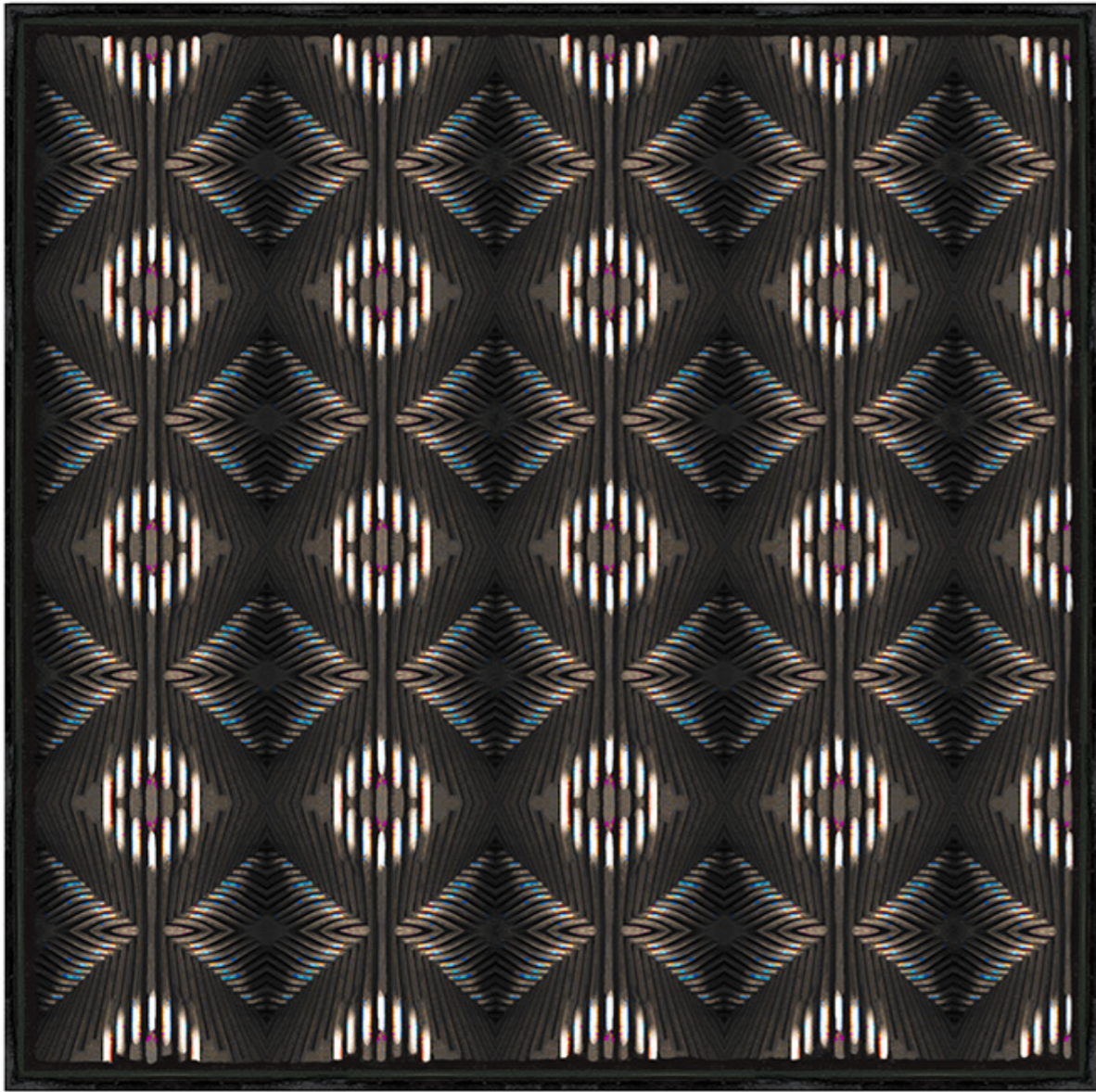
deco

dadaesques printed on silk



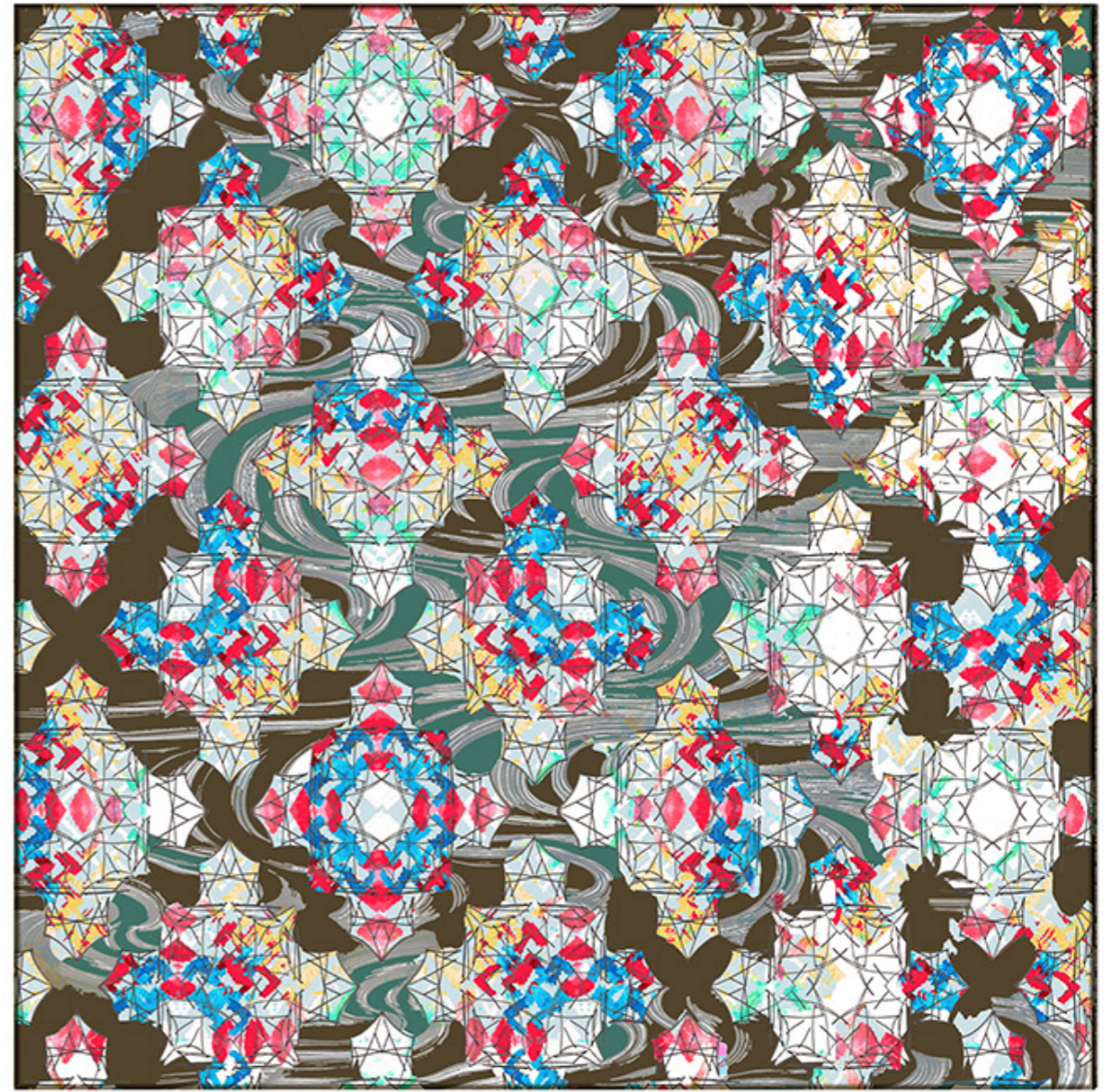
cyrus

SKA RVZ by rob walters



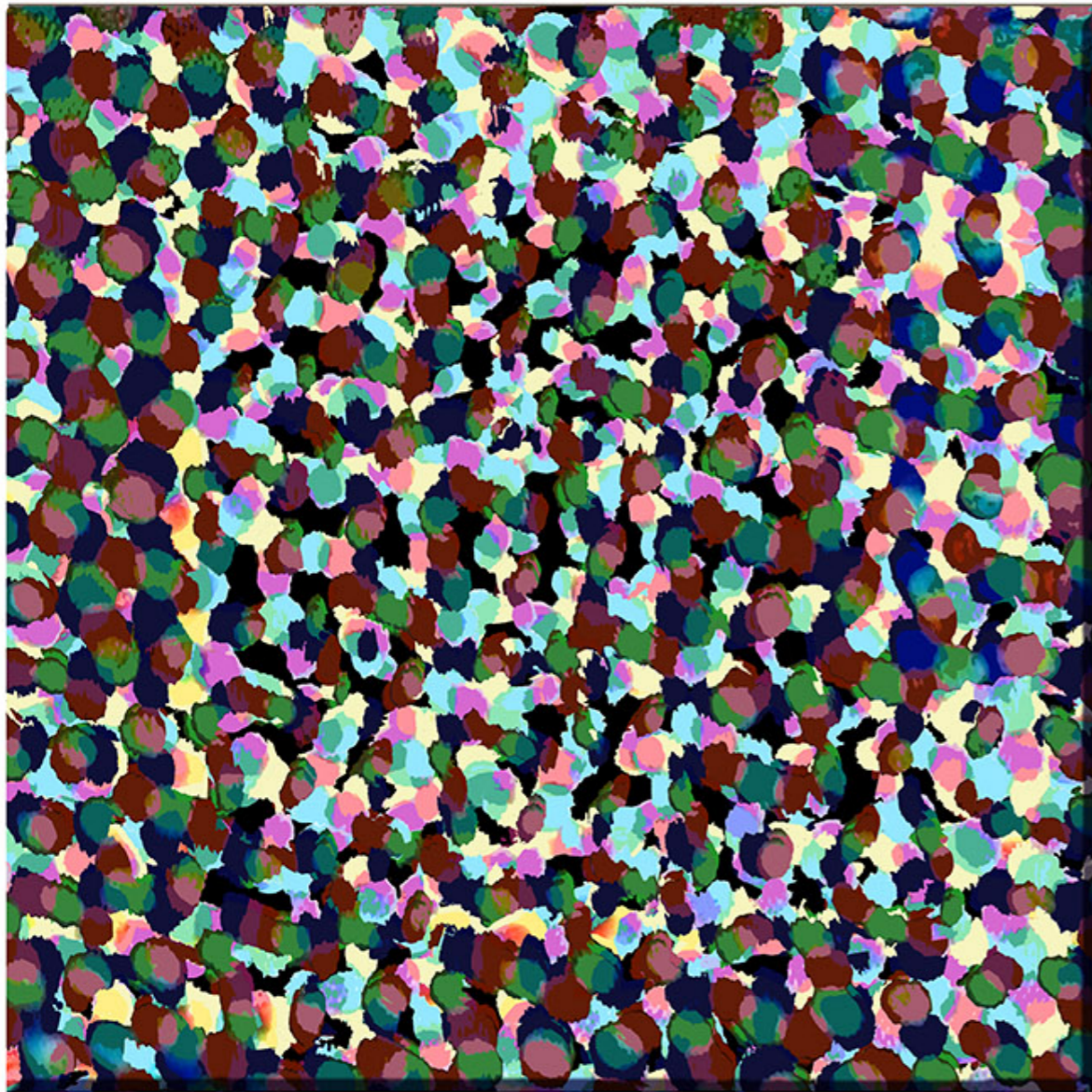
chaz

dadaesques printed on silk



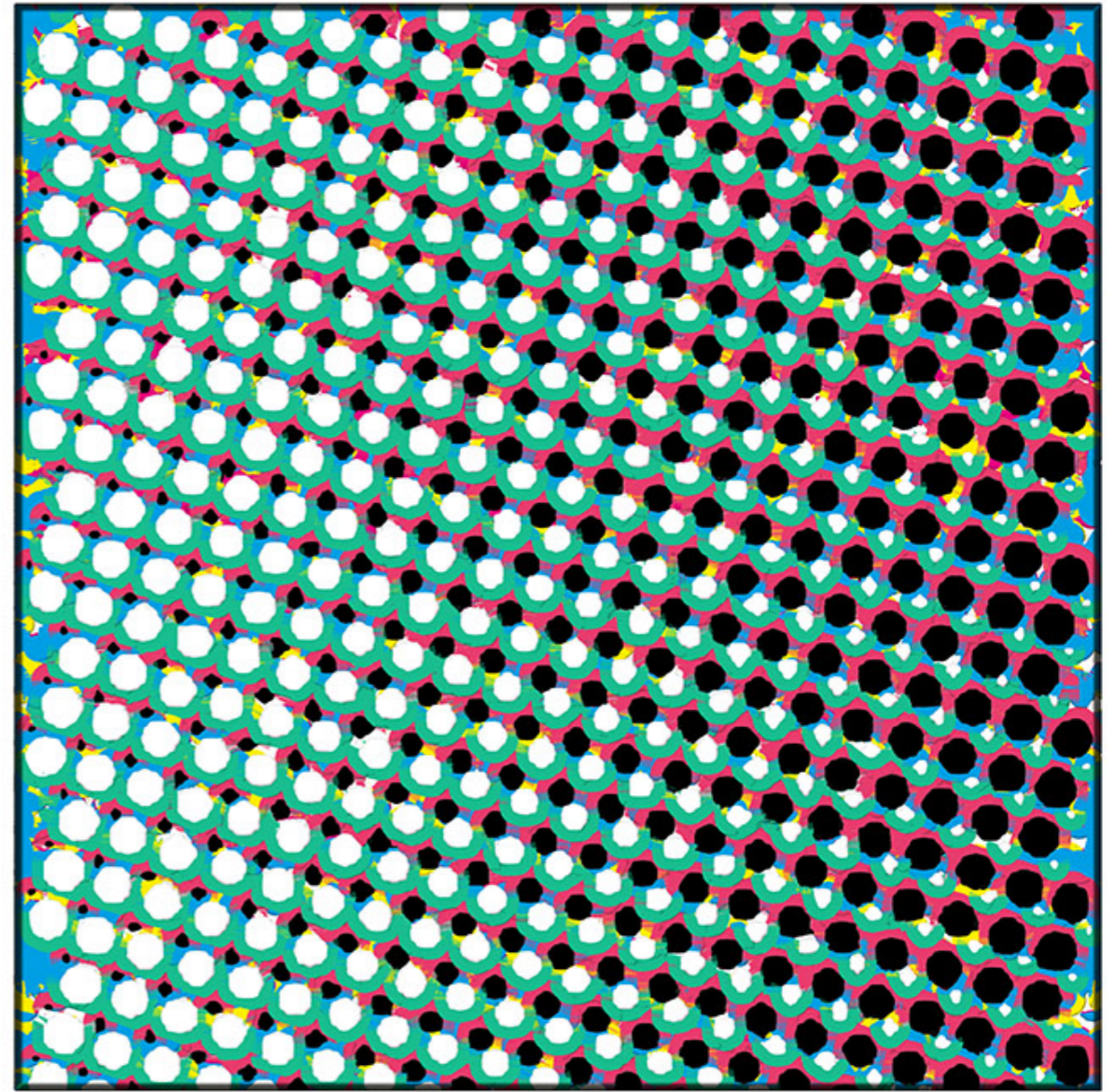
vainq

SKA RVZ by rob walters



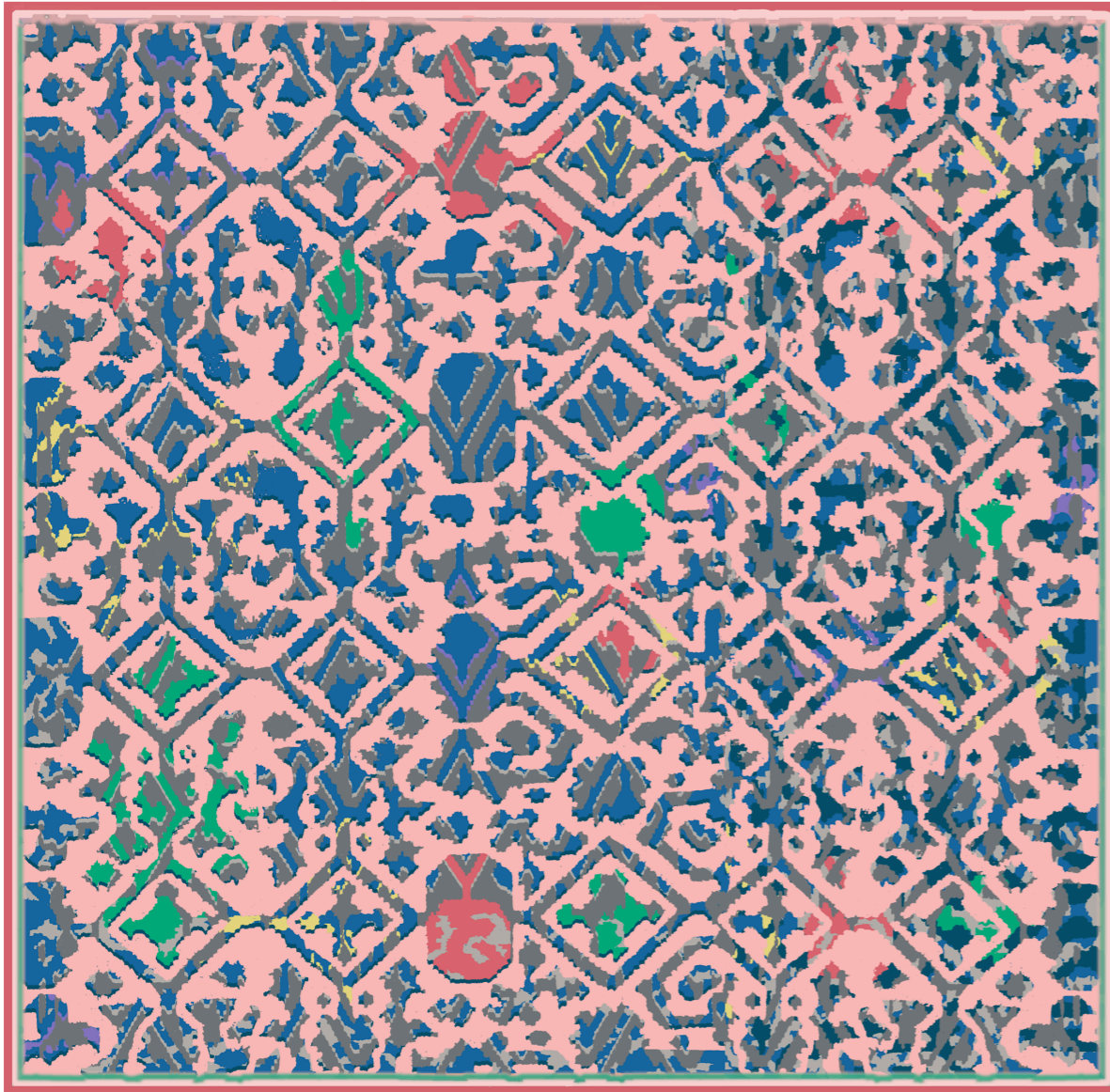
mellini

dadaesques printed on silk



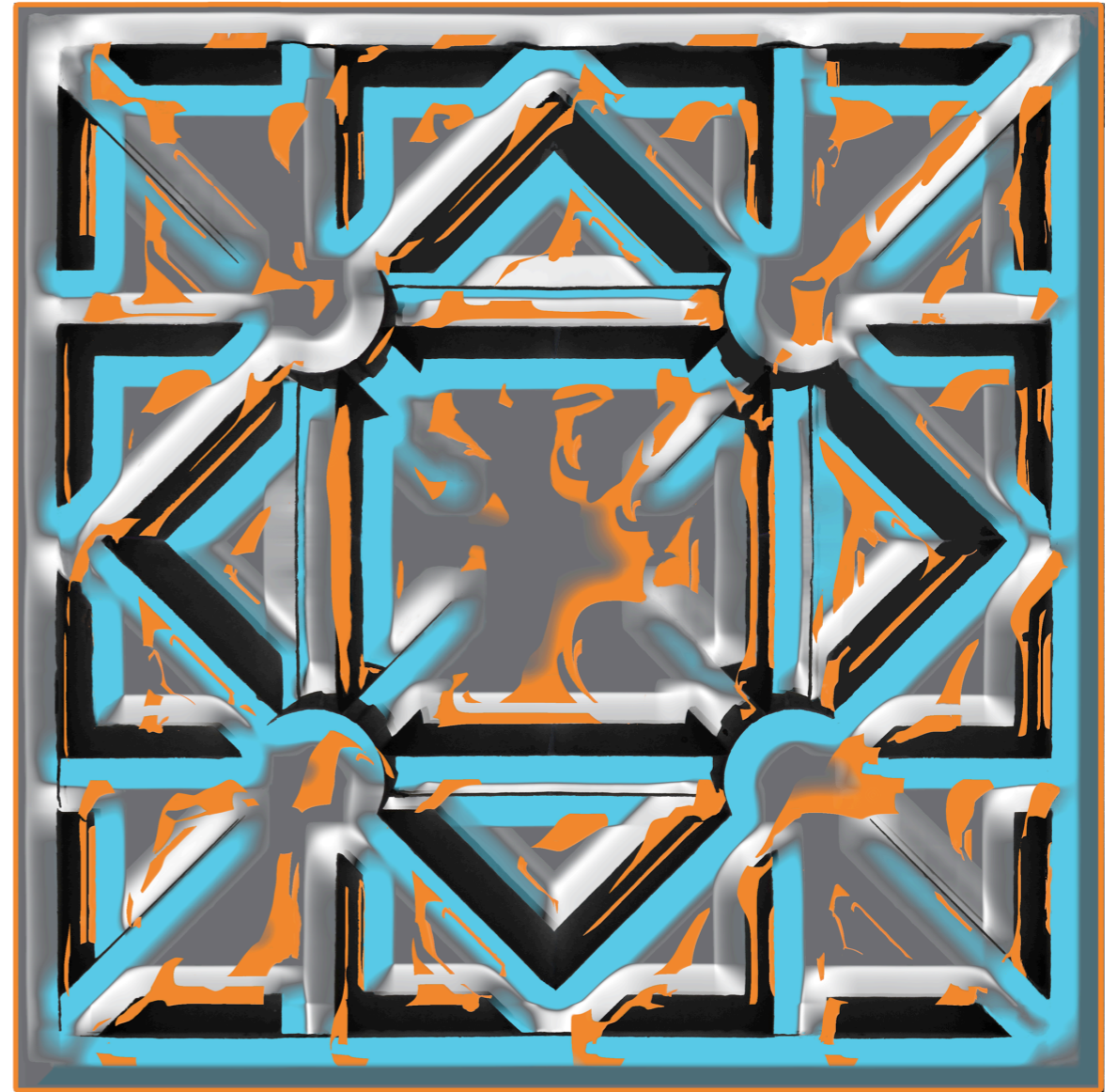
shift

SKA RVZ by rob walters



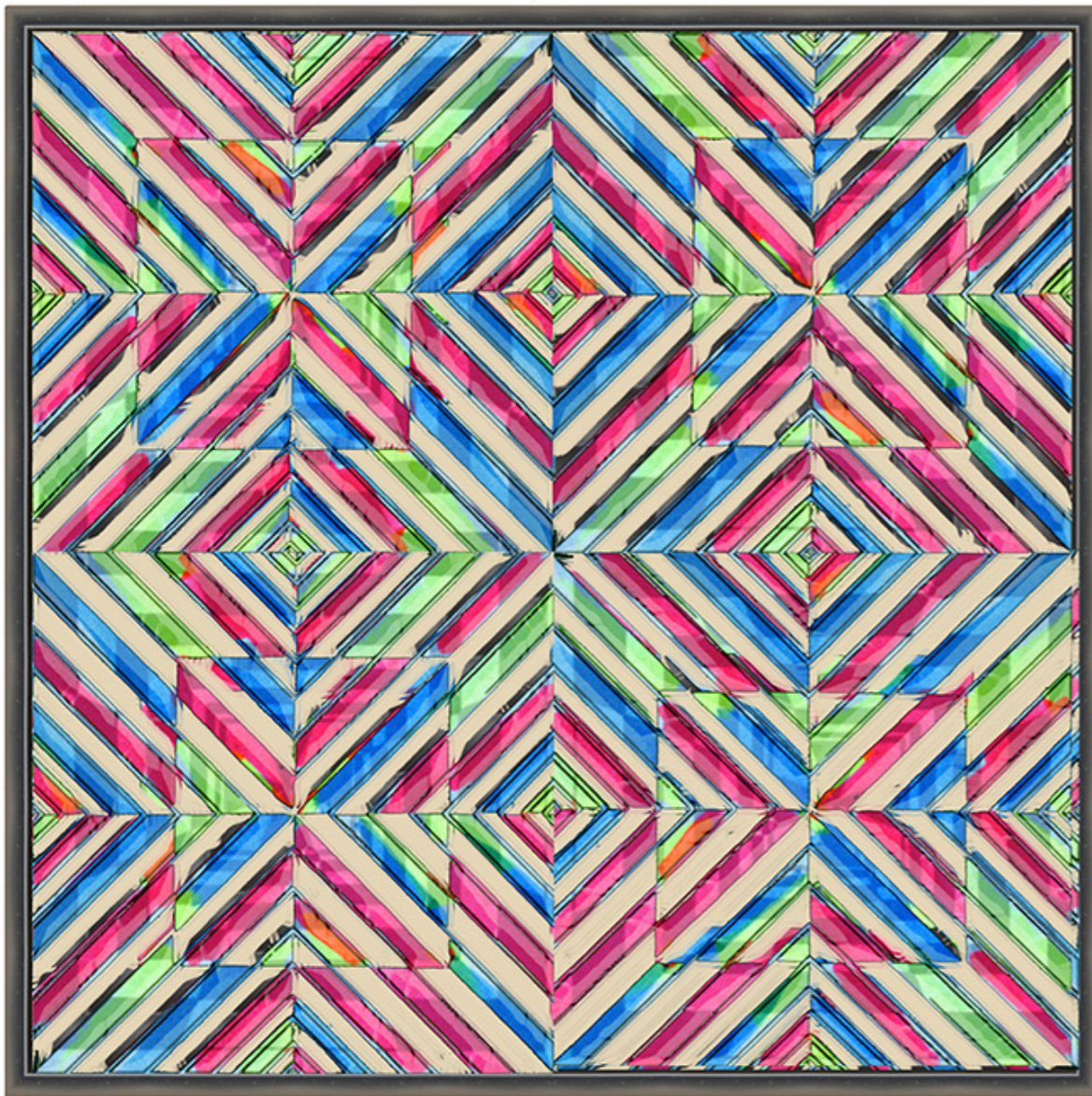
moyen

dadaesques printed on silk



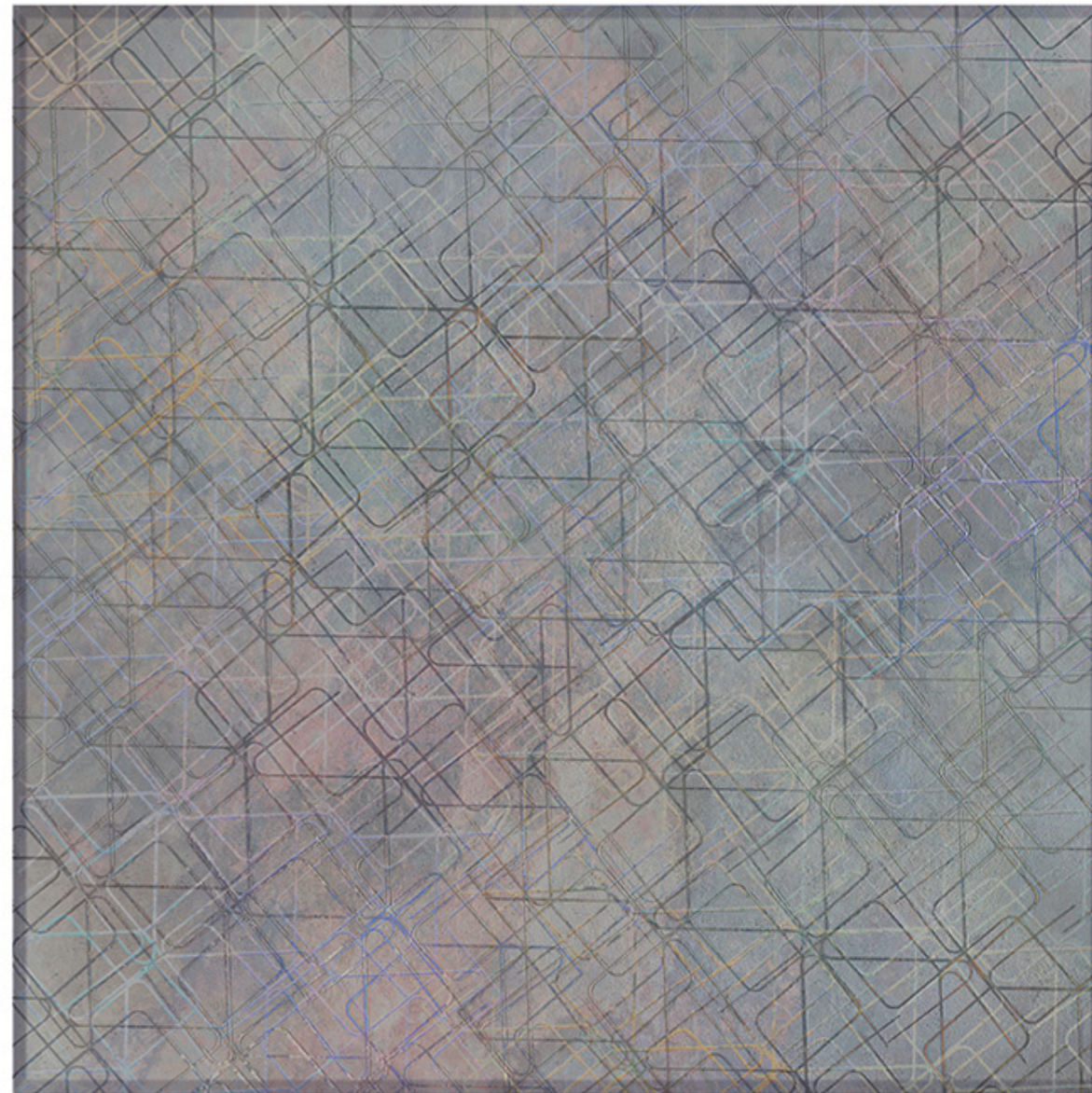
puis

SKARVZ by rob walters



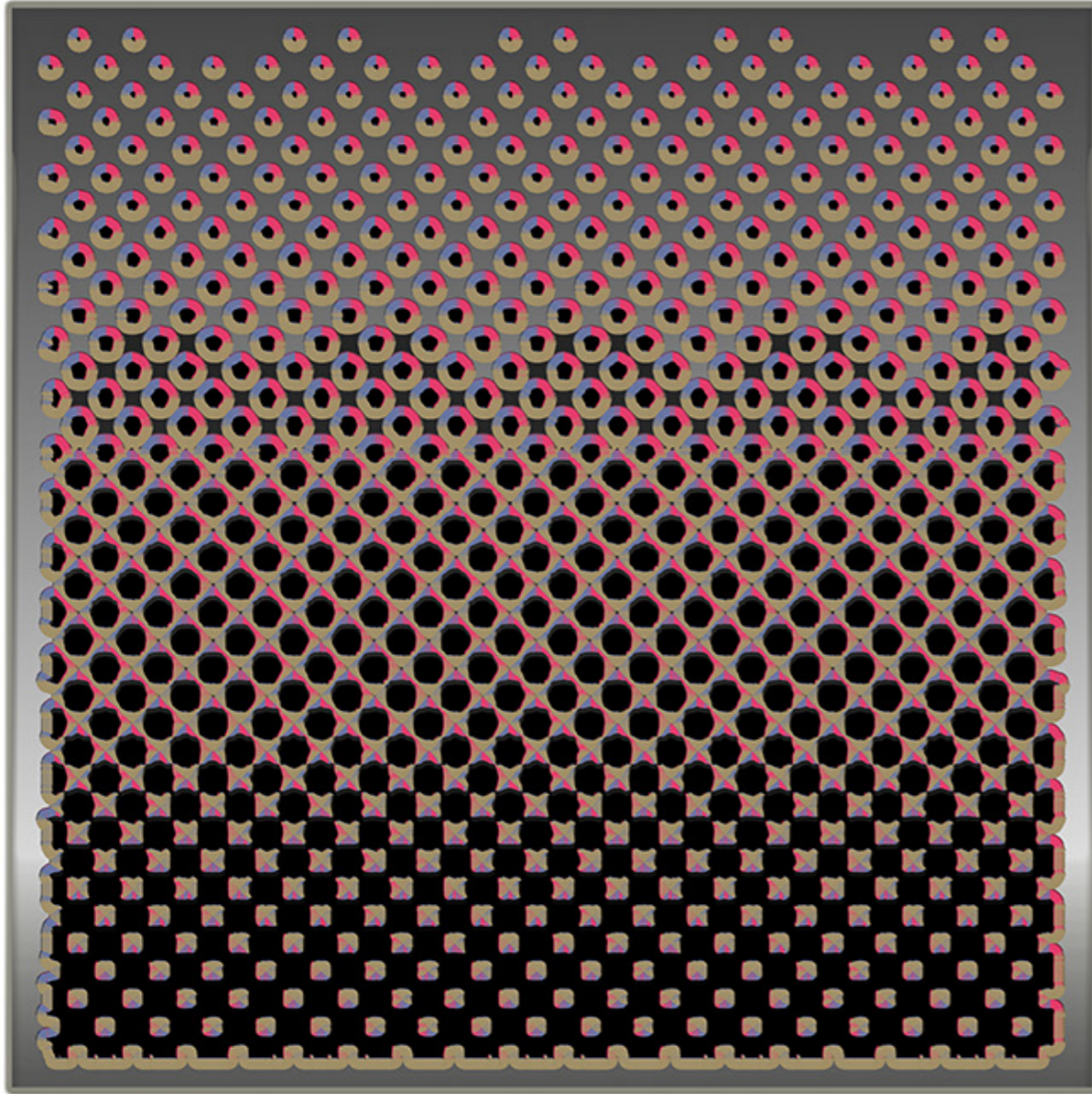
barrage

dadaesques printed on silk



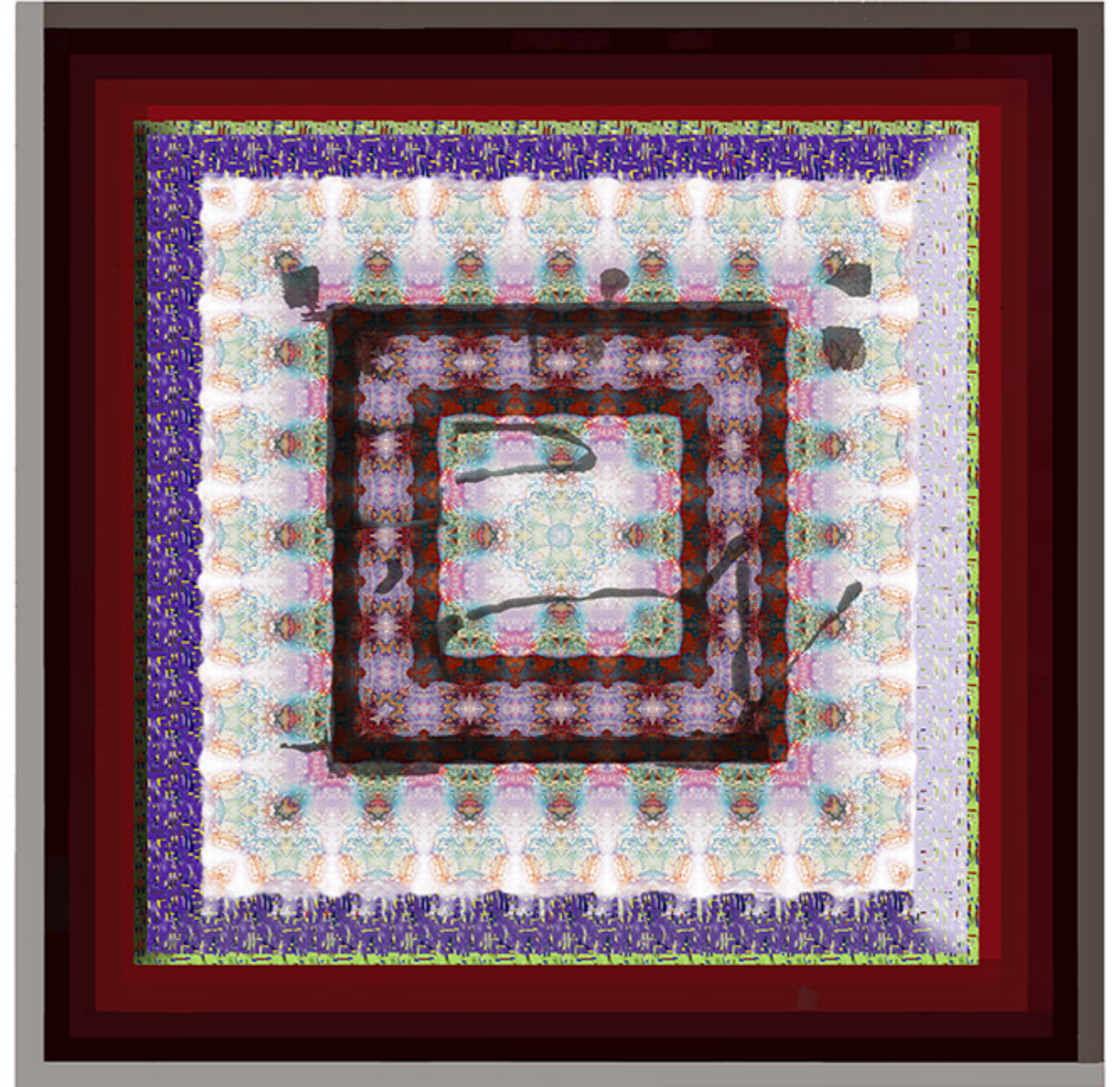
relief

SKA RVZ by rob walters



polis

dadaesques printed on silk



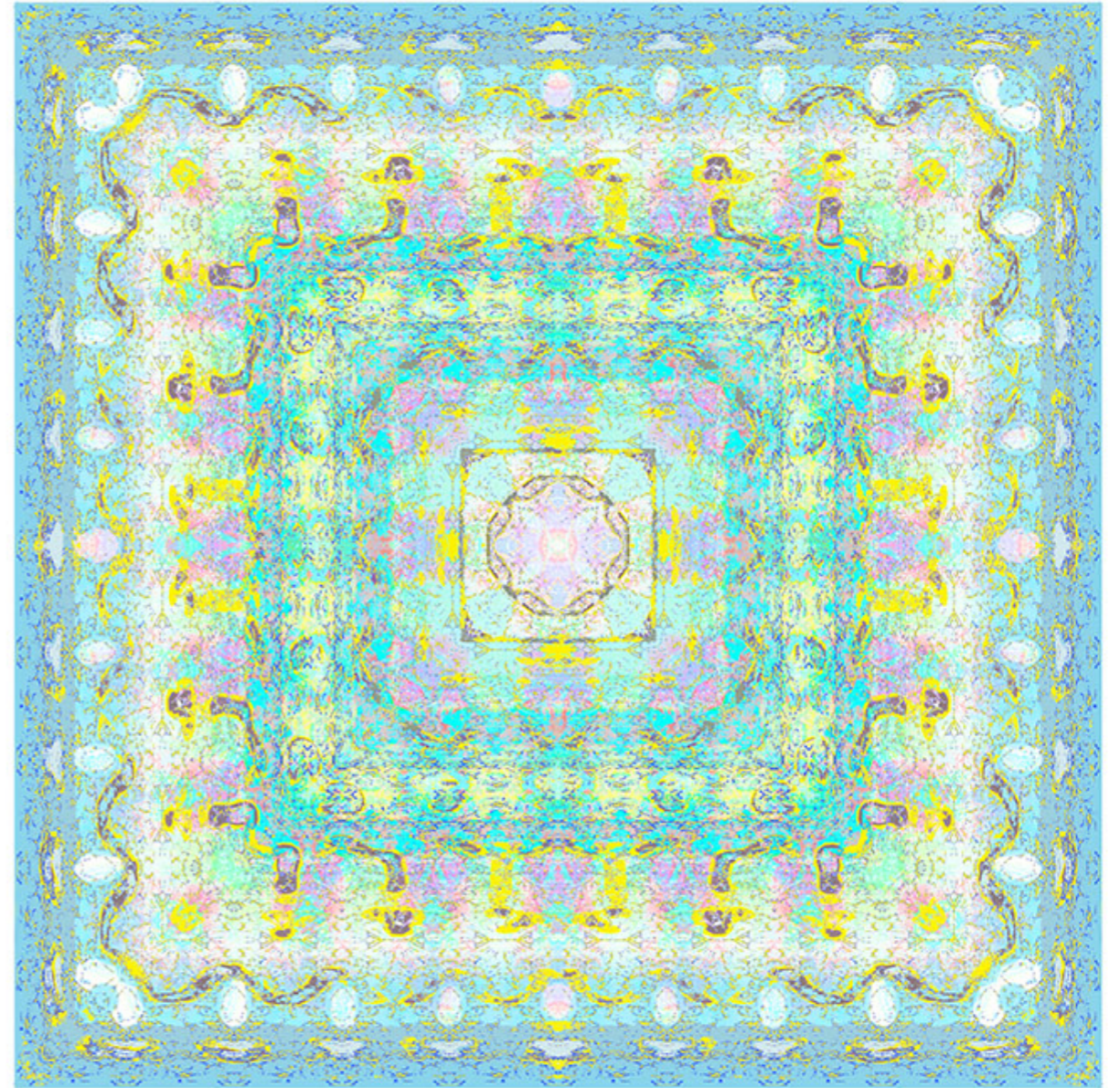
maluz

SKA RVZ by rob walters



icar

dadaesques printed on silk



source

SKA RVZ by rob walters