

The background is a complex abstract painting. It features a dense layer of colors including deep blues, bright reds, earthy oranges, and muted greens. The texture is highly tactile, with visible brushstrokes, some areas of thick impasto, and a grid-like pattern of thin, intersecting lines that create a sense of depth and structure. The overall effect is one of vibrant energy and intricate detail.

Moves

towards painting

Rob Walters

Moves

towards painting

Still puzzled and amazed when, after working in disaster areas, shapes and colours seems to fit and opening up new perspectives and questions. Obeying an order I can't grasp or explain yet. I'm content, I struggle with ideas, my work the presentation hereof.

Rob Walters

Some people think I'm a chameleon.

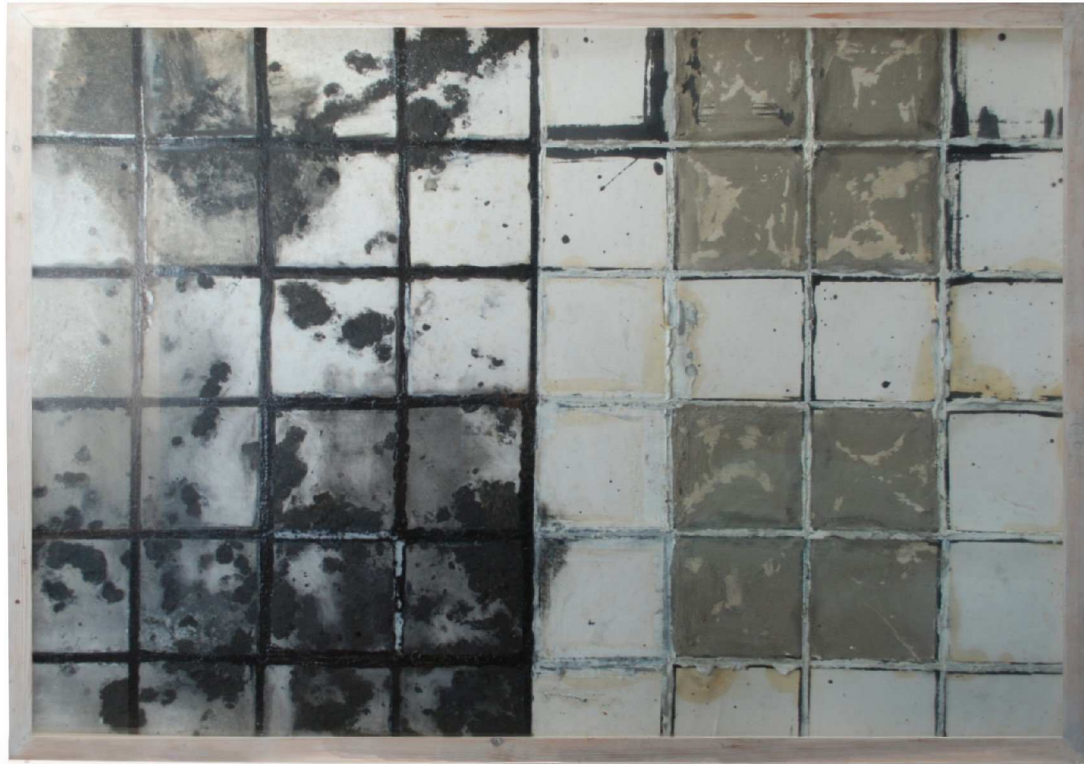
I'm still puzzled and amazed when, after working in disaster areas, shapes and colours seems to fit and opening up new perspectives. Obeying a order I can't grasp or explain yet. Work as the outcome of work. I'm content, I struggle with ideas, my work the presentation hereof.

Rob Walters

© 2013 door de auteur van dit boek. De auteur heeft de exclusieve rechten op zijn of haar bijdragen aan dit boek.

Lay-outontwerpen en grafische elementen van Blurb vallen onder auteursrecht van Blurb Inc., 2012. Dit boek is gemaakt met de Blurb-service voor creatieve publicaties. De auteur heeft de exclusieve rechten op zijn of haar bijdragen aan dit boek.

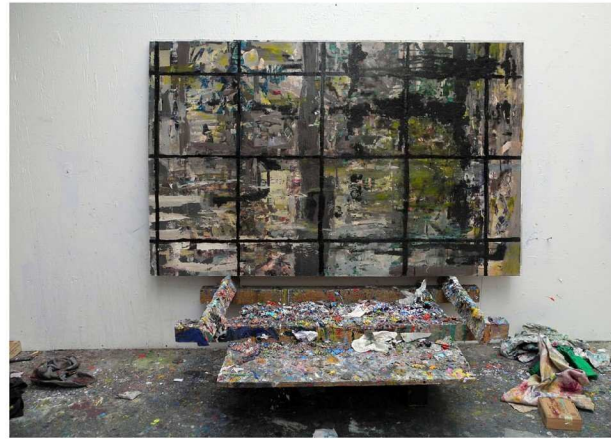
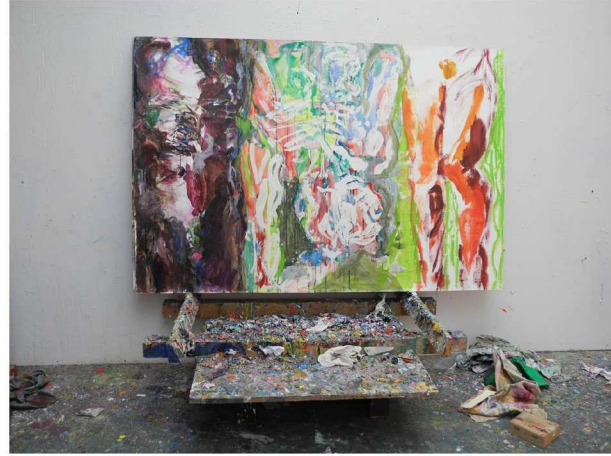




Juxtapose 1997 100x160cm cement, charcoal and acrylics on cardboard

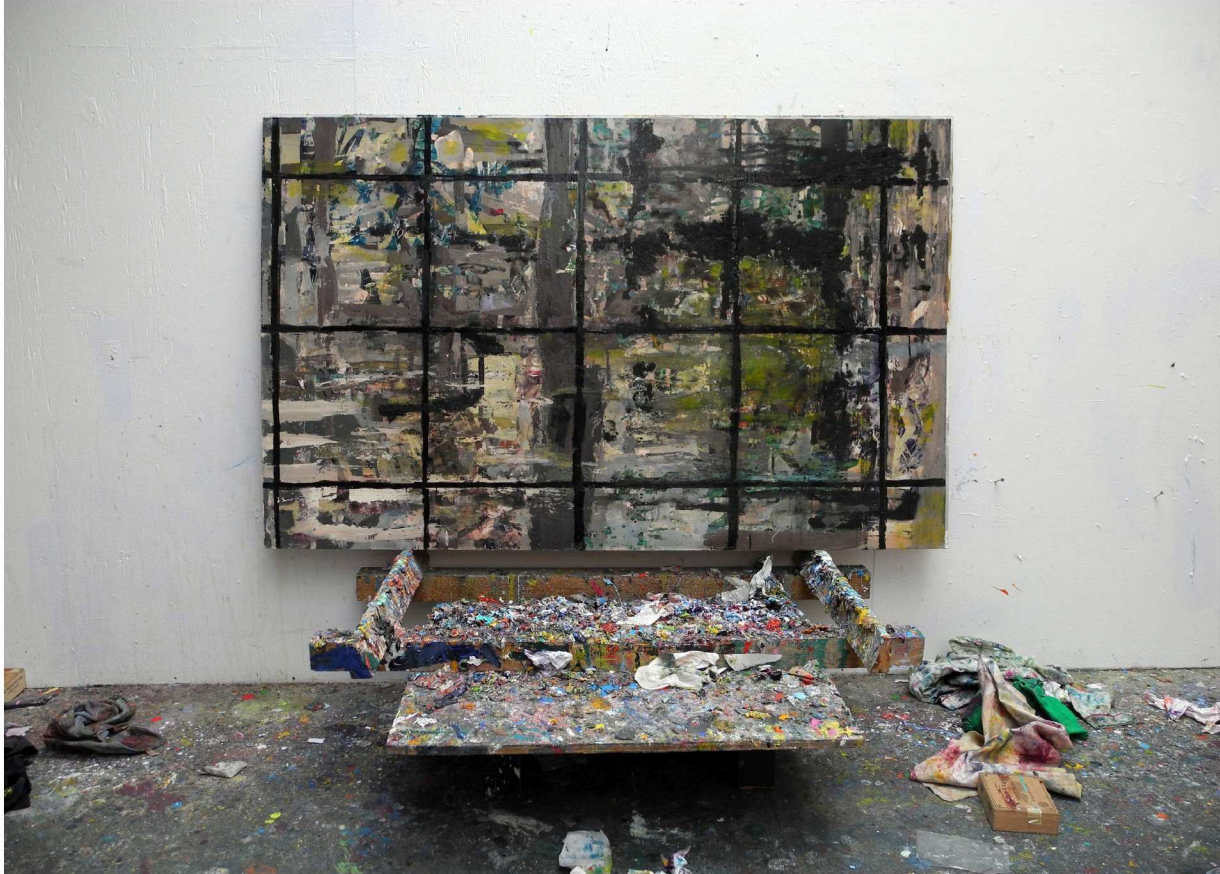


Seecells 1999 100x160cm plastic mirrors mixed media





Circuit 2003 100x160cm collage



Come to grips 1997 100x160cm charcoal and acrylics on cardboard



Hope Ha 2002 100x160cm sandpaper, acrylics on cardboard



Go in 2003 65x50cm mixed media on paper mounted on linen



Joyful cut 2001 100x160cm mixed media



Loose 1997 100x160cm copperpigment, newspaper and acrylics on cardboard



Leaf through 2012 65x50cm acrylics on paper mounted on linen



Mist through 2012-2013 65x50cm copperpigment and acrylics on paper

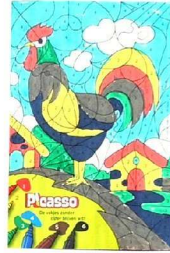




Sighing 2008 70x50cm acrylics on paper mounted on linen



Drift 2009 65x50cm collage: wood and stucelement on paper mounted on linen



Dynamic Dye 2012 20x29cm acrylics on museumboard



Fall 2003 100x160cm charcoal and acrylics on paper



Mind a copy 2012 65x50cm acrylics and carbonpaper on paper



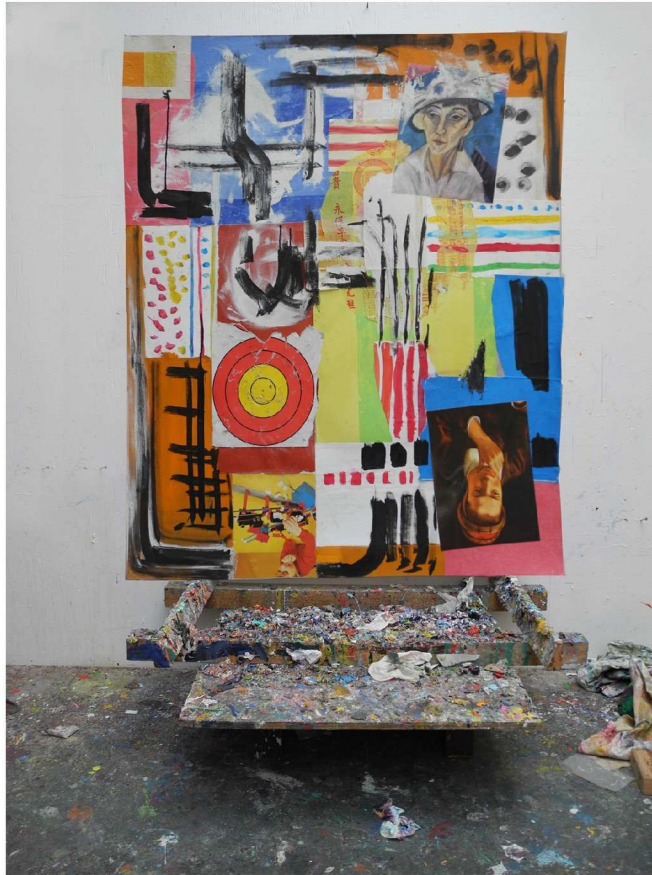
Borderlines 1998 100x160cm peralpowder ,pigments and olistick on paper



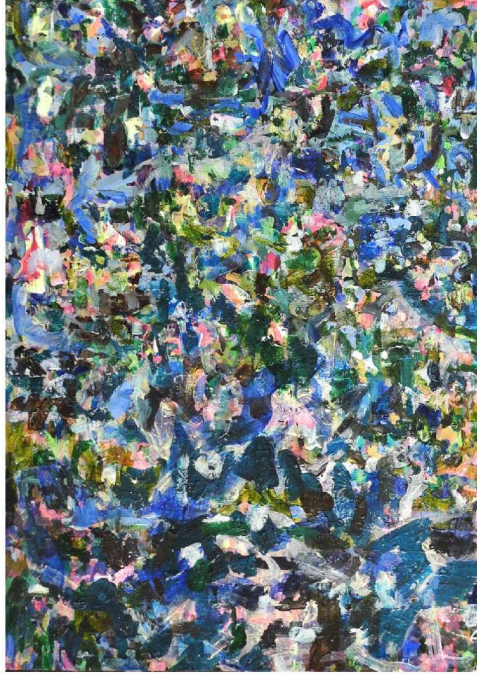
Push 1999 100x160cm ink, acrylics on cardboard



Moved 2010 70x50cm collage; acrylics and printed images on paper



Tracker 2003 160x100cm collage; acrylics and printed images on cardboard



Movements in colour and space 2011-2012 70x50cm acrylics on paper



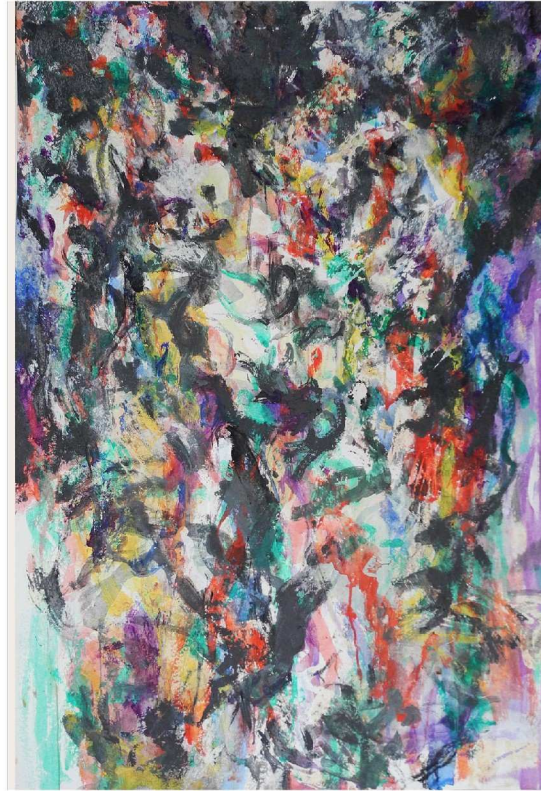
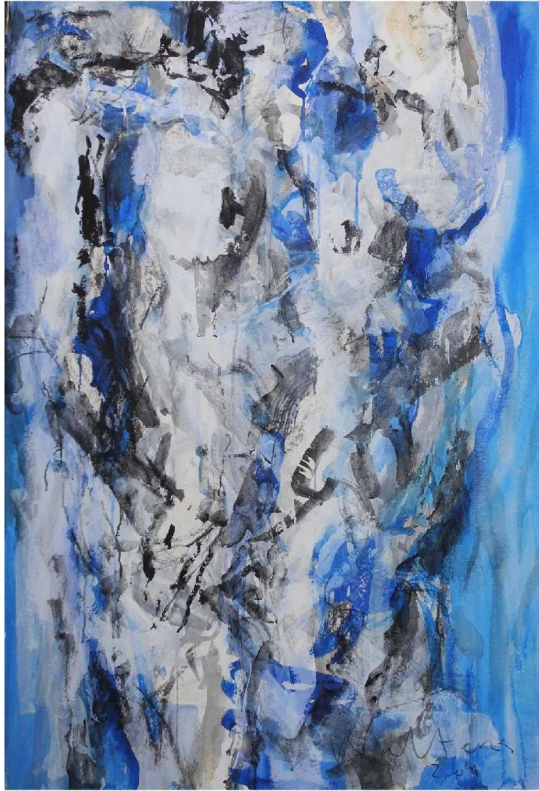
Season 2003 100x160cm collage; mixed media



Scribbler 2000 80x100cm oilpaint and acrylics on paper mounted on linen



Bluenoise 2012 70x50cm acrylics on paper



Nudes moving out 1998 110x75cm mixed media on aquarellepaper

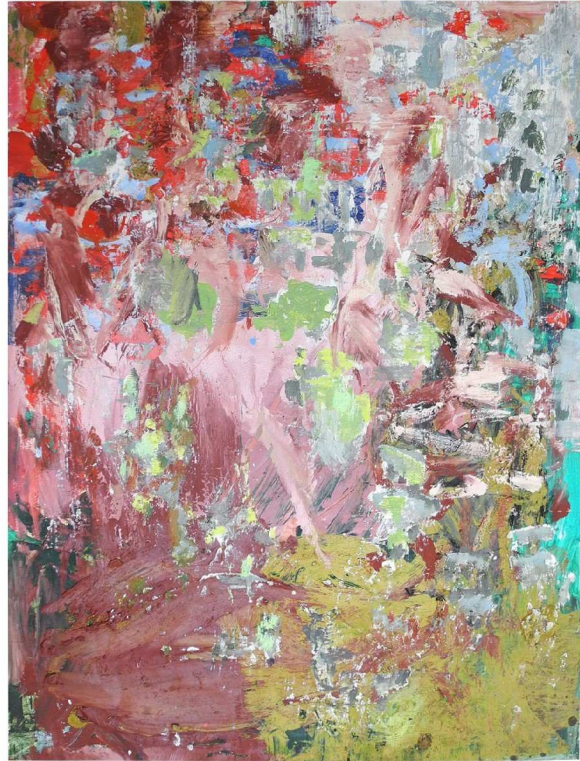




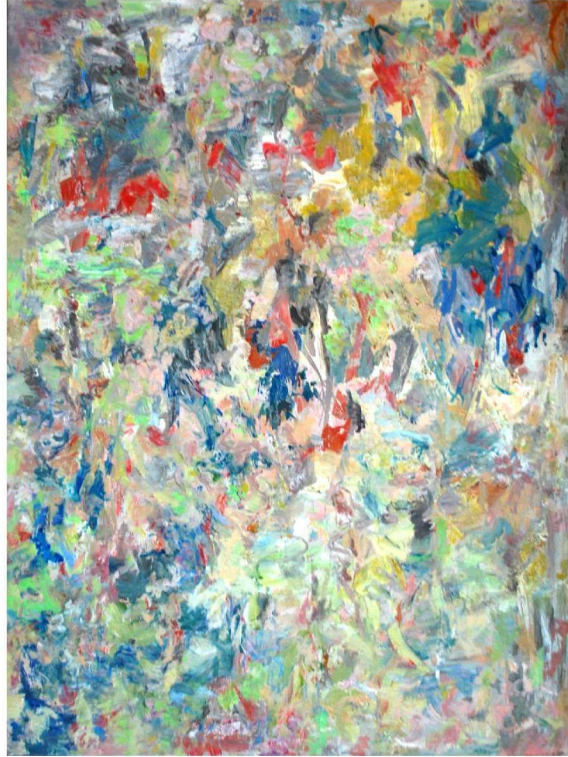
Moved 1998 110x75cm ink, charcoal on aquarellepaper



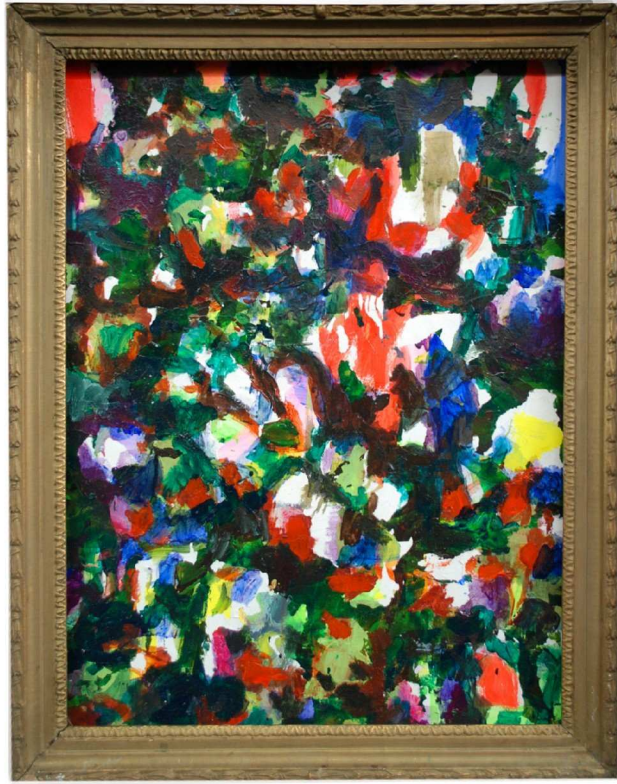
Shaker 2003 100x160cm mixed media on cardboard



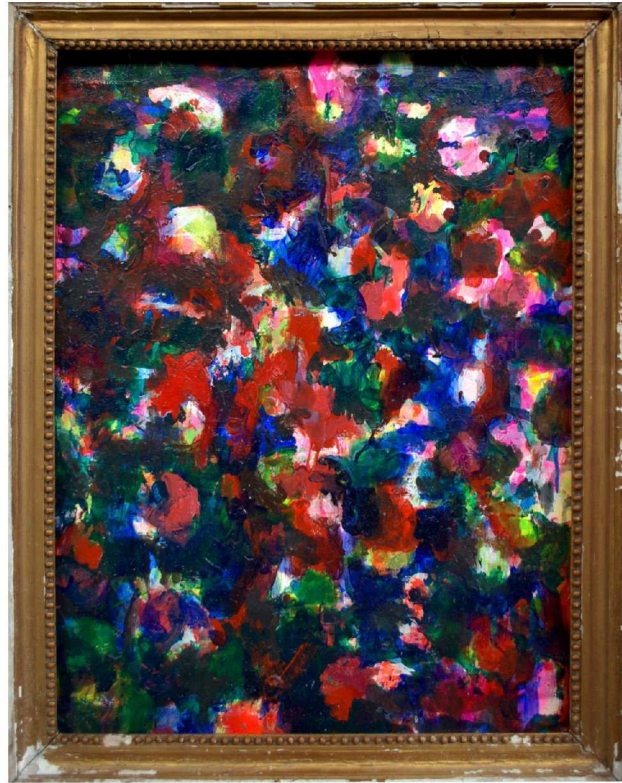
Stream I&II 2002 110x75cm acrylics on paper



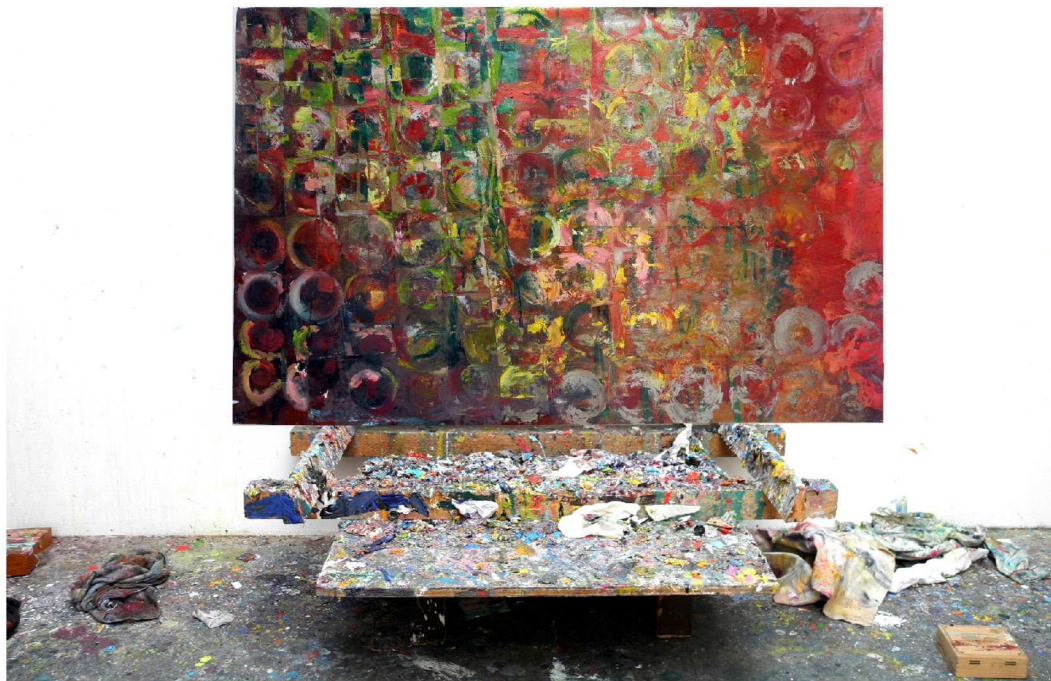
Stream 2002 110x75cm acrylics on paper mounted on linen



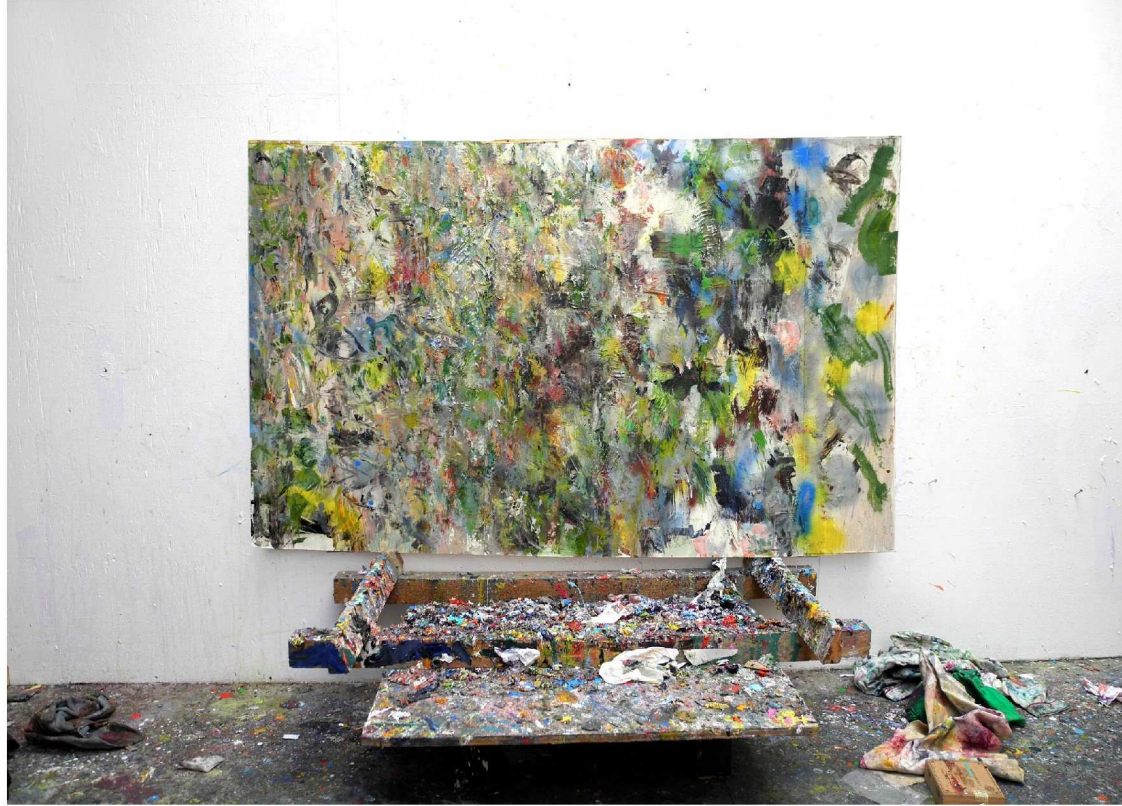
Waltz 2013 70x50cm acrylics on paper, bronze tinted vintage frame



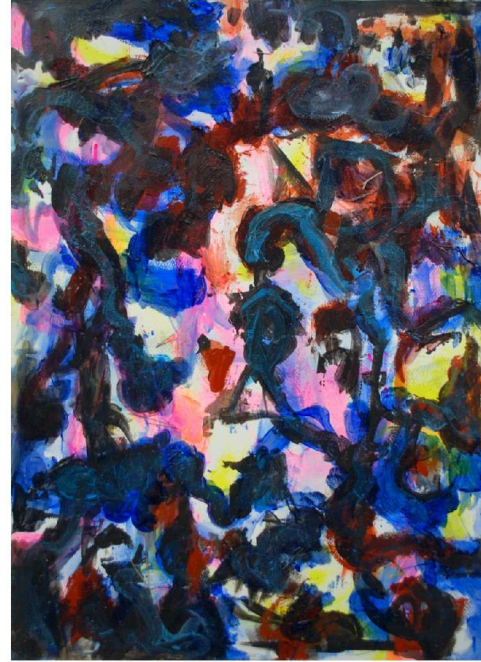
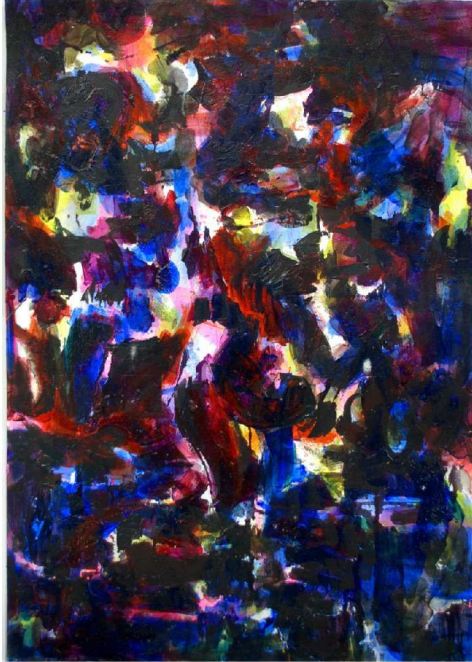
Shift 2013 70x50cm acrylics on paper, gold tinted vintage frame



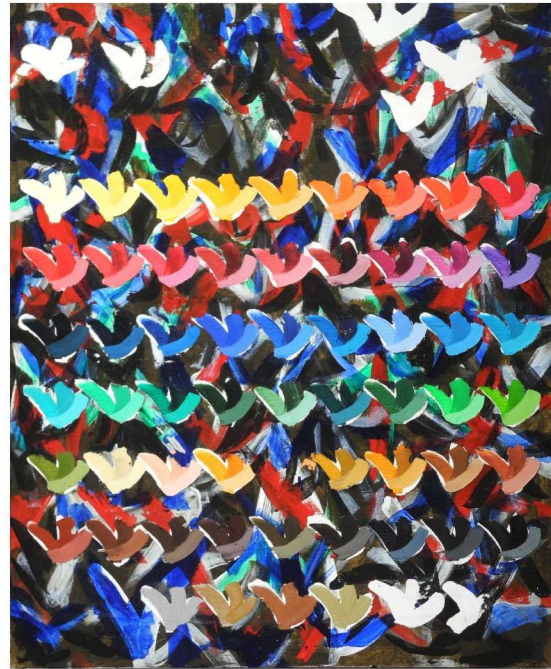
Sferes 2004 100x160cm mixed media on cardboard



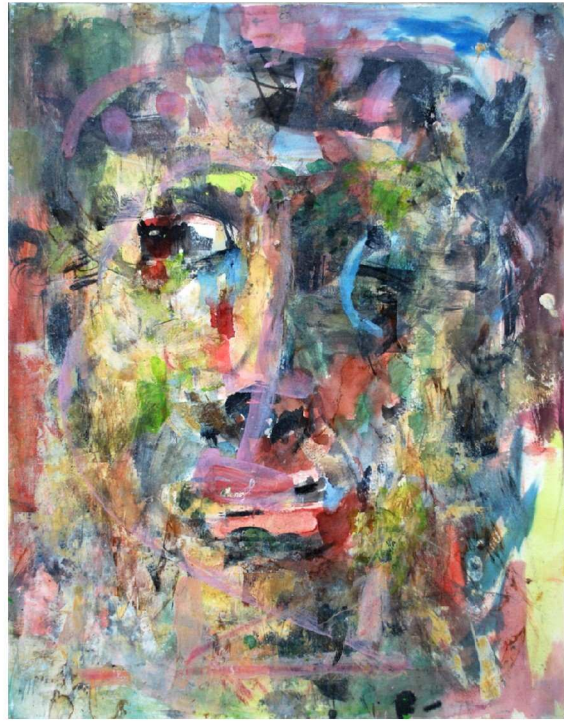
Merge 2004 100x160cm oilpaint and acrylics on paper



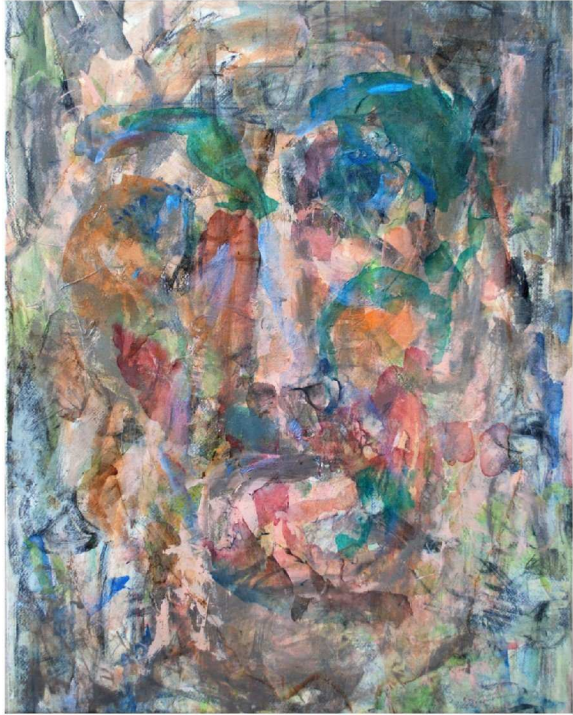
Grow I 2013 70x50cm acrylics on paper

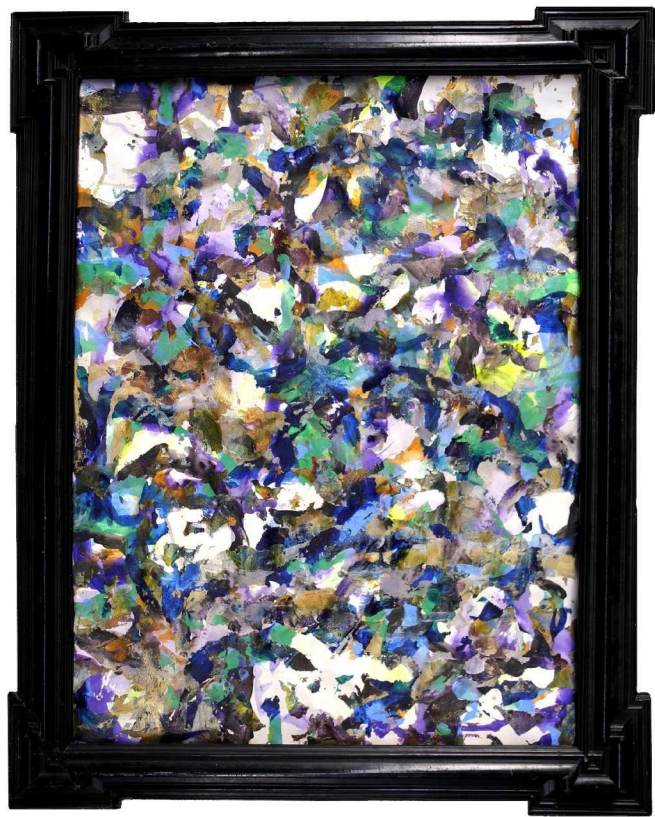


Dots and Strokes 2012 80x60cm oilpaint and acrylics on canvas and board

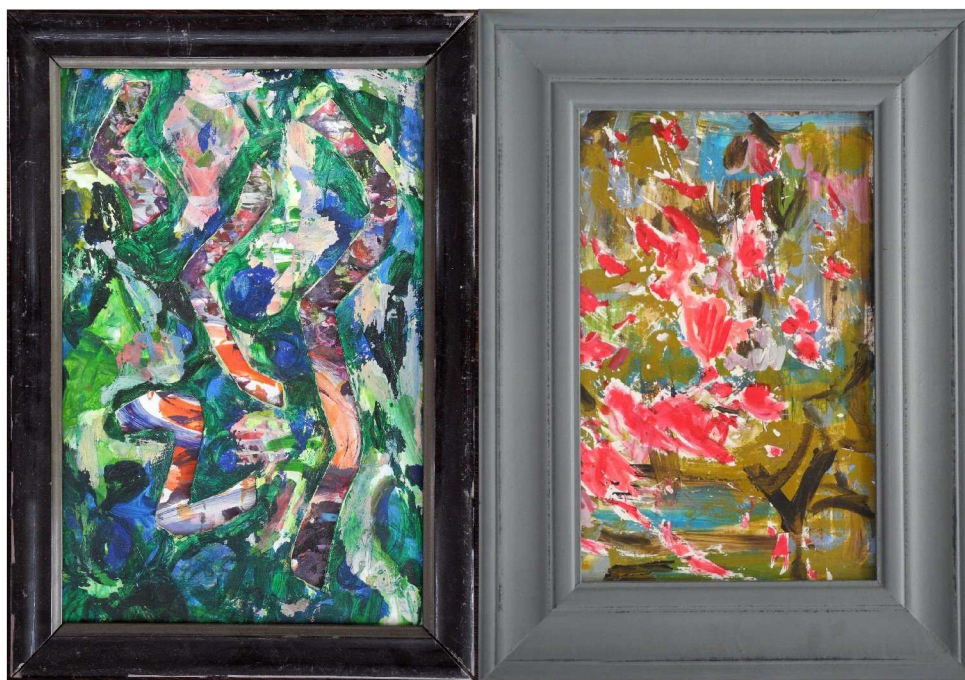


Appearance 2004 65x40cm burnt japsane paper on paper mounted on linen

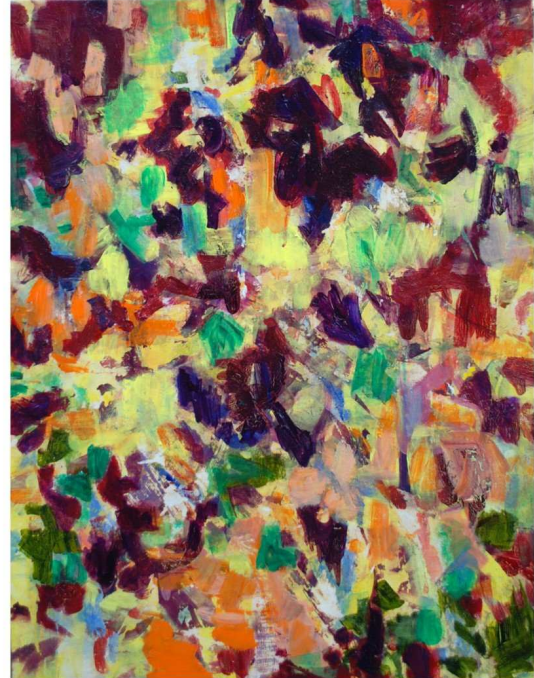




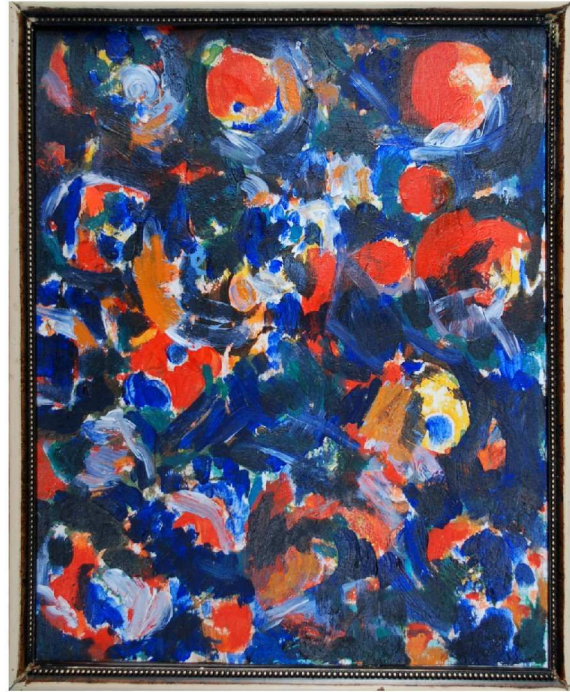
Playing Waves 2010 70x50cm acrylics on paper, black vintage frame



Blow 2011 43x33cm oil and acrylics on museumboard



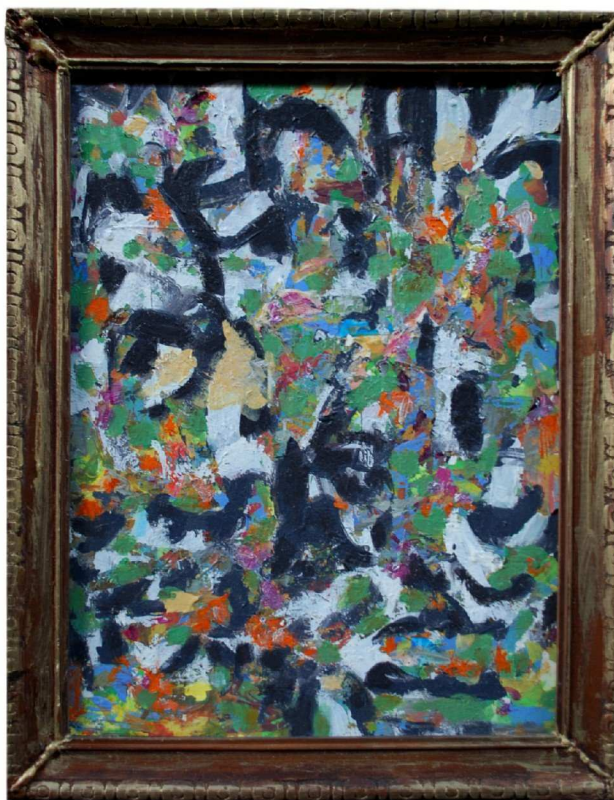
RY -B 2004-2013 65x50cm acrylics op paper mounetd on linen



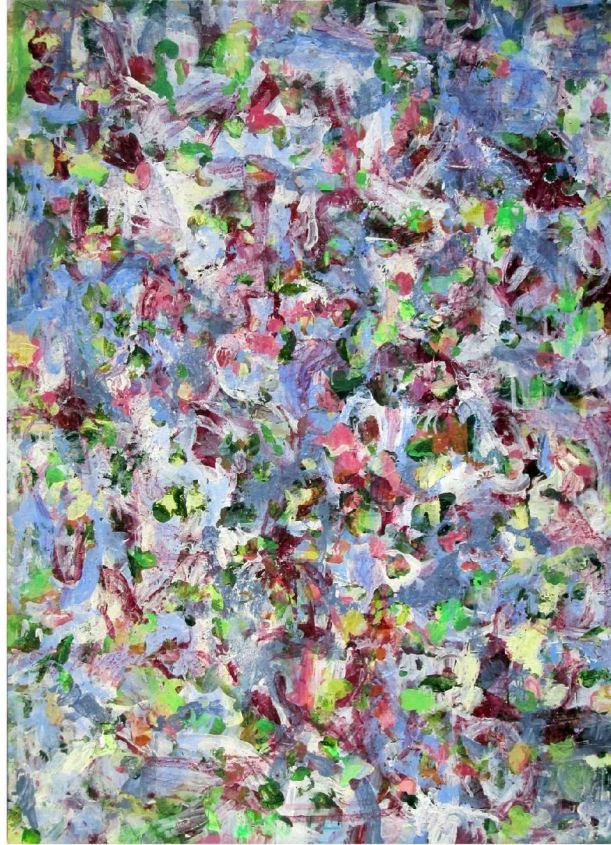
Noisy 2010 37x31cm acrylics on museumboard, brushed frame



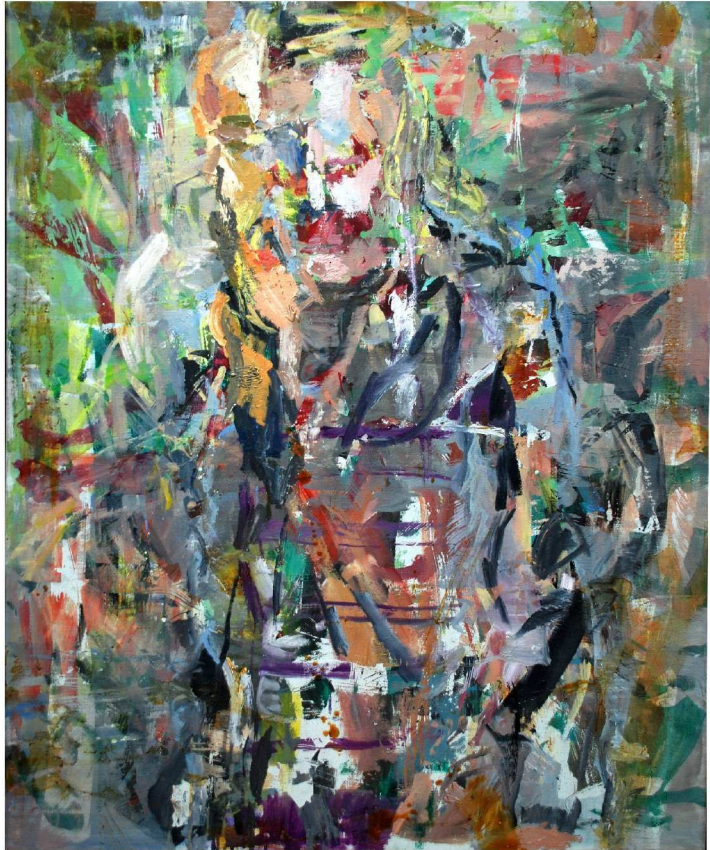
Rabarber 2013 70x50cm acrylics on museumboard, greenish vintage frame



Dance to her tune 2011 47x35cm acrylics on museumboard, vintage frame



Wind 2008 70x50cm acrylics on paper mounted on linen



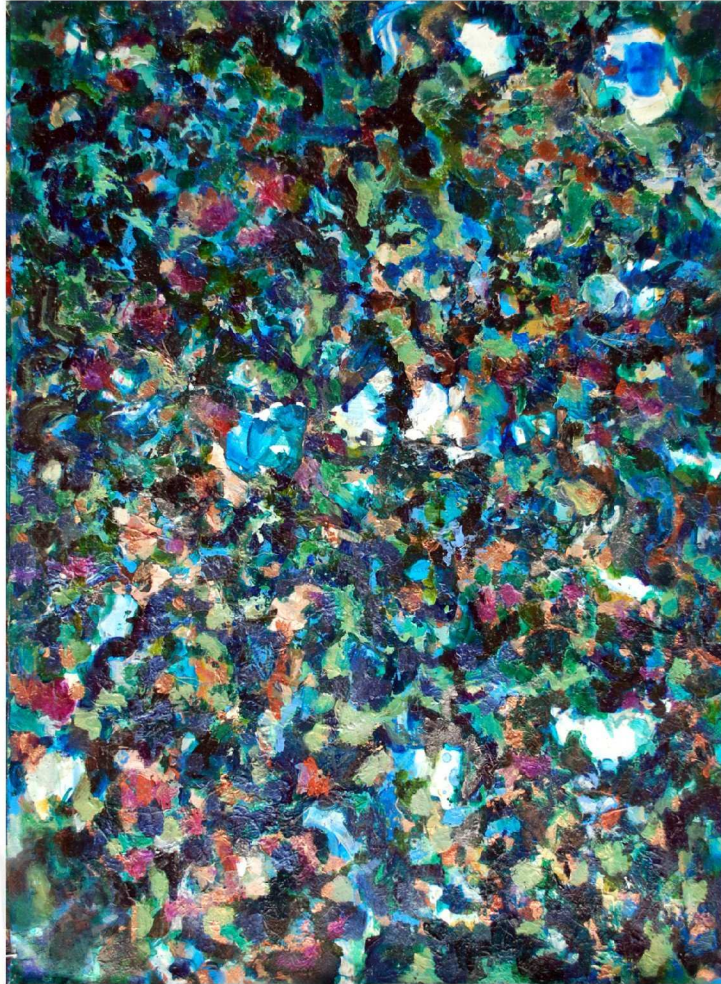
Walking from minor into major 1999 120x80 cm oil and acrylics on canvas



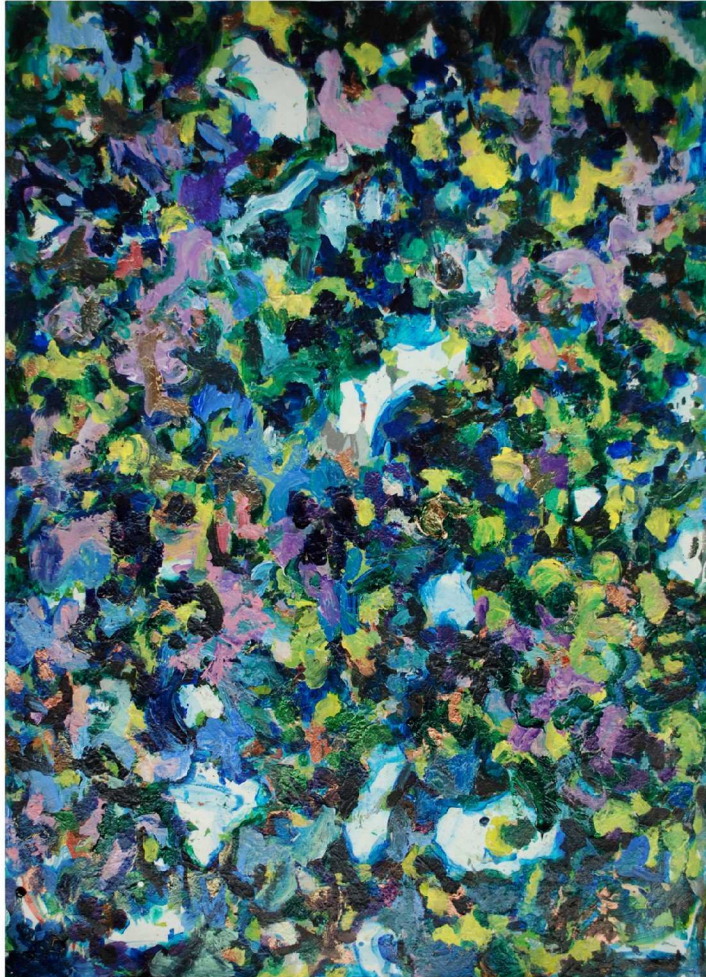
Garland 2012-2013 70x50cm acrylics,oil on paper



Garland 2013 70x50cm acrylics on paper



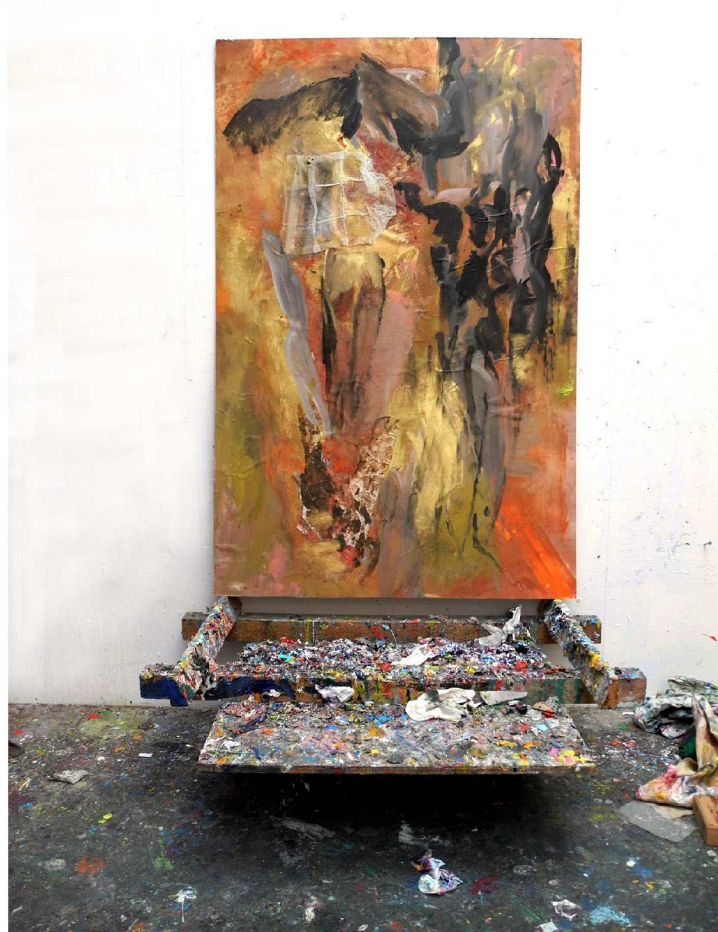
Circuit 2013 70x50cm acrylics on paper



Dress up 2013 70x50cm acrylics and copperpigment on paper



Old Feuilles 2007 115x75cm collage; acrylics and printed images on paper mounted on linen



Jump 2001 160x100cm mixe media; goldpigment and gauze



Building 2013 70x50cm acrylics on paper



Blaze 2012-2013 120x80cm acrylics on 400gr. paper



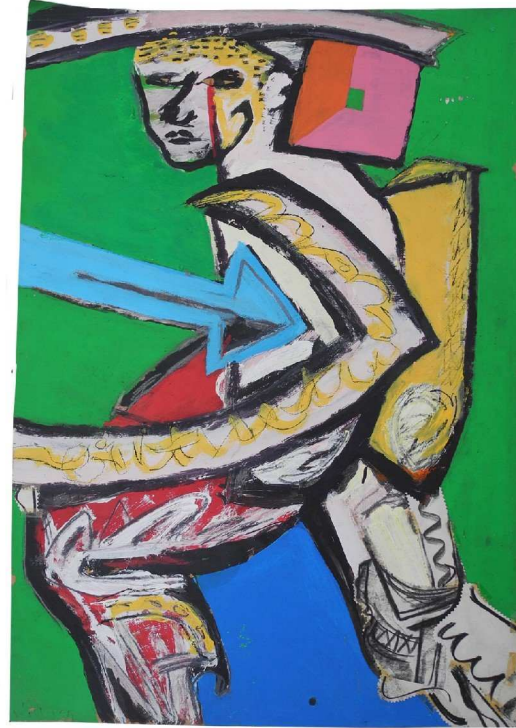
Lines 1997 100x80cm oilpaint and acrylics on canvas



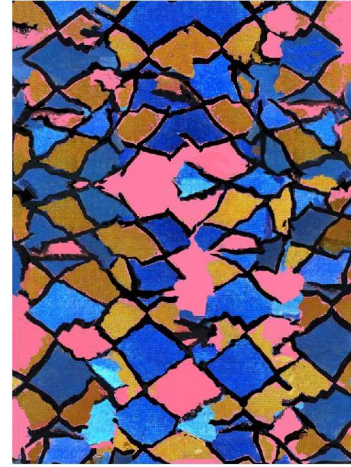
Stitch 1997 100x160cm acrylics on cardboard



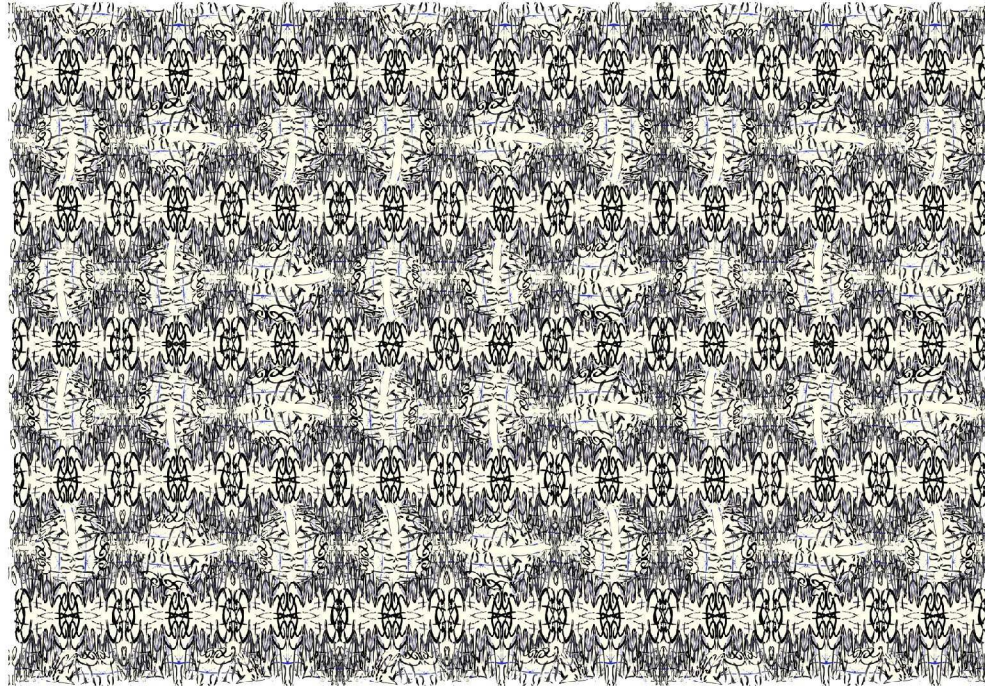
Worship 2005 150x100cm collage; printed image and wrappers on cardboard



The Sower 1984 E&OA 100x70cm acrylics on paper



Arlequin 2012-2013 100x70cm silkscreen limited edition



Graffiti; the game 2012 silk-screen limited edition



